



**Water Monitoring Result at C7 - Windsor House
Mid-Flood Tide**

Date	Time	Weather Condition	Sampling Depth		Water Temperature		pH			Salinity			DO Saturation		DO		Turbidity		Suspended Solids					
					°C		-		ppt		%		mg/L		NTU		mg/L							
			m	Value	Average	Value	Average	Value	Average	Value	Average	Value	Average	Value	Average	Value	Average	Value	Average					
29/6/2015	17:43	Fine	Middle	-	29.10	29.10	29.15	8.37	8.37	8.38	23.33	23.33	23.32	77.9	76.3	74.7	5.26	5.15	5.04	14.24	13.17	<u>13.73</u>	10	10.00
	17:45		Middle	-	29.20	29.20		8.39	8.39		23.31	23.31		73.4	71.3		4.95	4.81		14.24	13.28		10	
2/7/2015	21:05	Fine	Middle	-	28.00	28.00	28.05	8.07	8.07	8.08	26.46	26.46	26.46	79.9	81.9	80.2	5.37	5.52	5.39	7.89	7.00	7.31	8	7.50
	21:06		Middle	-	28.10	28.10		8.08	8.08		26.46	26.46		80.5	78.5		5.41	5.27		7.16	7.20		7	
4/7/2015	22:17	Fine	Middle	-	27.80	27.80	27.90	8.11	8.11	8.11	29.14	29.13	29.13	77.4	77.1	75.8	5.12	5.10	5.02	2.27	2.24	2.25	<2	<2
	22:18		Middle	-	28.10	27.90		8.10	8.10		29.13	29.10		75.3	73.5		5.01	4.86		2.20	2.29		<2	
6/7/2015	22:26	Cloudy	Middle	-	26.46	26.46	26.45	7.80	7.80	7.80	17.35	17.35	17.36	92.5	92.5	92.3	6.75	6.75	6.73	3.35	3.45	3.30	4	3.50
	22:27		Middle	-	26.44	26.44		7.80	7.80		17.36	17.36		92.3	92.0		6.73	6.70		3.19	3.21		3	
8/7/2015	-	Fine	Middle	-	-	-	-	-	-	-	-	-	-	-	-	-	-	-	-	-	-	-	-	
	-		Middle	-	-	-	-	-	-	-	-	-	-	-	-	-	-	-	-	-	-	-	-	
10/7/2015	-	Fine	Middle	-	-	-	-	-	-	-	-	-	-	-	-	-	-	-	-	-	-	-	-	
	-		Middle	-	-	-	-	-	-	-	-	-	-	-	-	-	-	-	-	-	-	-	-	
13/7/2015	-	Fine	Middle	-	-	-	-	-	-	-	-	-	-	-	-	-	-	-	-	-	-	-	-	
	-		Middle	-	-	-	-	-	-	-	-	-	-	-	-	-	-	-	-	-	-	-	-	
15/7/2015	18:28	Cloudy	Middle	-	28.16	28.16	28.16	7.51	7.51	7.51	25.25	25.25	25.28	90.0	89.4	89.2	6.11	6.07	6.05	1.49	1.53	1.52	<2	<2
	18:29		Middle	-	28.15	28.15		7.50	7.50		25.30	25.30		88.9	88.5		6.03	6.00		1.56	1.51		<2	
17/7/2015	18:27	Cloudy	Middle	-	28.62	28.62	28.58	7.54	7.54	7.54	30.42	30.42	30.42	90.8	90.6	90.6	5.95	5.93	5.93	1.57	1.59	1.56	4	3.50
	18:28		Middle	-	28.54	28.54		7.53	7.53		30.42	30.42		90.6	90.4		5.93	5.91		1.55	1.52		3	
20/7/2015	10:25	Cloudy	Middle	-	26.50	26.50	26.50	8.11	8.11	8.12	32.09	32.09	32.09	68.3	67.7	68.9	4.45	4.40	4.56	3.88	3.87	3.92	3	3.00
	10:27		Middle	-	26.50	26.50		8.13	8.13		32.08	32.08		69.6	70.0		4.67	4.70		3.95	3.96		3	
22/7/2015	-	Amber Rainstorm	Middle	-	-	-	-	-	-	-	-	-	-	-	-	-	-	-	-	-	-	-	-	
	-		Middle	-	-	-	-	-	-	-	-	-	-	-	-	-	-	-	-	-	-	-	-	
25/7/2015	23:46	Cloudy	Middle	-	27.58	27.58	27.58	7.50	7.50	7.50	25.30	25.30	25.30	86.3	86.2	86.2	5.91	5.90	5.90	1.84	1.64	1.71	3	3.00
	23:47		Middle	-	27.58	27.58		7.49	7.50		25.30	25.30		86.0	86.4		5.88	5.92		1.68	1.66		3	

Remarks:
Single underline denotes exceedance over Action Level.
Double underline denotes exceedance over Limit Level.



**Water Monitoring Result at C1 - HKCEC Extension
Mid-Flood Tide**

Date	Time	Weather Condition	Sampling Depth		Water Temperature			pH			Salinity			DO Saturation			DO			Turbidity			Suspended Solids	
			m		°C		-		ppt		%		mg/L		NTU		mg/L							
					Value	Average	Value	Average	Value	Average	Value	Average	Value	Average	Value	Average	Value	Average	Value	Average				
29/6/2015	16:56	Fine	Middle	2.5	28.50	28.50	28.60	8.45	8.45	8.45	24.58	24.58	24.57	83.2	82.7	82.2	5.62	5.59	5.55	3.71	3.87	3.82	7	6.00
	16:58		Middle	2.5	28.70	28.70		8.45	8.45		24.56	24.56		81.2	81.6		5.49	5.51		3.94	3.75		5	
2/7/2015	17:46	Fine	Middle	2.5	28.80	28.80	28.85	8.50	8.50	8.50	25.83	25.83	25.88	90.0	90.7	87.8	6.02	6.06	5.84	3.73	3.64	3.66	7	7.50
	17:48		Middle	2.5	28.90	28.90		8.49	8.49		25.92	25.92		88.3	82.1		5.80	5.49		3.64	3.64		8	
4/7/2015	21:59	Fine	Middle	2.5	27.10	27.10	27.15	8.21	8.21	8.21	29.96	29.96	29.96	72.9	73.7	73.3	4.90	4.95	4.93	3.38	3.46	3.39	3	3.50
	22:00		Middle	2.5	27.20	27.20		8.21	8.21		29.95	29.95		74.0	72.6		4.97	4.88		3.30	3.42		4	
6/7/2015	1:50	Cloudy	Middle	2.5	25.49	25.49	25.54	7.38	7.38	7.40	30.74	30.74	30.74	92.2	92.1	92.0	6.34	6.33	6.32	2.71	2.64	2.66	<2	<2
	1:51		Middle	2.5	25.59	25.59		7.41	7.41		30.74	30.73		92.0	91.8		6.32	6.30		2.68	2.61		<2	
8/7/2015	10:54	Fine	Middle	2.5	25.60	25.60	25.65	8.26	8.26	8.26	32.50	32.50	32.50	72.3	73.3	72.1	4.92	4.93	4.89	3.37	3.31	3.30	4	4.50
	10:56		Middle	2.5	25.70	25.70		8.25	8.25		32.49	32.49		72.0	70.6		4.89	4.80		3.27	3.25		5	
10/7/2015	14:21	Fine	Middle	3.0	26.30	26.30	26.35	8.26	8.26	8.26	32.73	32.73	32.73	74.3	74.0	73.9	4.99	4.97	4.96	4.16	4.05	4.16	4	4.50
	14:23		Middle	3.0	26.40	26.40		8.26	8.26		32.73	32.73		73.3	74.0		4.92	4.96		4.14	4.27		5	
13/7/2015	17:21	Fine	Middle	2.5	27.70	27.70	27.70	8.23	8.23	8.23	31.75	31.75	31.75	73.2	73.3	72.8	4.83	4.83	4.80	4.68	4.29	4.39	3	3.00
	17:23		Middle	2.5	27.70	27.70		8.22	8.22		31.75	31.75		74.2	70.5		4.89	4.65		4.28	4.29		3	
15/7/2015	16:44	Cloudy	Middle	2.5	28.00	28.00	28.05	8.25	8.25	8.23	30.97	30.97	30.97	70.4	70.7	70.1	4.63	4.65	4.63	3.35	3.47	3.39	5	4.00
	16:46		Middle	2.5	28.10	28.10		8.21	8.21		30.97	30.97		70.7	68.4		4.65	4.60		3.38	3.37		3	
17/7/2015	21:40	Cloudy	Middle	2.5	27.78	27.78	27.78	7.55	7.55	7.55	30.72	30.72	30.73	78.2	78.1	78.6	5.09	5.09	5.10	2.48	2.50	2.53	5	5.00
	21:41		Middle	2.5	27.77	27.77		7.55	7.55		30.73	30.73		79.0	78.9		5.10	5.10		2.58	2.55		5	
20/7/2015	8:35	Cloudy	Middle	2.5	27.20	27.20	27.27	8.16	8.16	8.19	32.09	32.09	32.09	74.0	75.4	74.7	4.90	4.99	4.95	5.47	5.43	5.37	4	4.00
	8:37		Middle	2.5	-	27.40		8.22	8.22		32.09	32.09		75.8	73.5		5.02	4.87		5.36	5.22		4	
22/7/2015	-	Amber Rainstorm	Middle	-	-	-	-	-	-	-	-	-	-	-	-	-	-	-	-	-	-	-	-	
	-		Middle	-	-	-	-	-	-	-	-	-	-	-	-	-	-	-	-	-	-	-	-	
25/7/2015	2:53	Cloudy	Middle	2.5	27.22	27.22	27.23	7.49	7.49	7.49	26.52	26.52	26.53	81.3	81.4	81.2	5.56	5.57	5.56	2.94	2.84	2.86	4	3.50
	2:54		Middle	2.5	27.23	27.23		7.49	7.49		26.54	26.54		81.1	81.0		5.55	5.54		2.83	2.81		3	

Remarks:
Single underline denotes exceedance over Action Level.
Double underline denotes exceedance over Limit Level.



**Water Monitoring Result at P1 - HKCEC Phase I
Mid-Flood Tide**

Date	Time	Weather Condition	Sampling Depth		Water Temperature			pH			Salinity			DO Saturation			DO			Turbidity			Suspended Solids	
			m		°C		-		ppt		%		mg/L		NTU		mg/L							
					Value	Average	Value	Average	Value	Average	Value	Average	Value	Average	Value	Average	Value	Average	Value	Average				
29/6/2015	16:40	Fine	Middle	2.5	30.00	30.00	30.05	8.31	8.31	8.35	23.38	23.38	23.62	78.0	81.4	79.1	5.17	5.39	5.25	4.07	4.06	4.00	6	6.50
	16:42		Middle	2.5	30.10	30.10		8.39	8.39		23.85	23.85		80.7	76.1		5.35	5.07		3.98	3.87		7	
2/7/2015	17:30	Fine	Middle	2.5	29.20	29.20	29.45	8.49	8.49	8.52	25.73	25.73	25.73	103.2	102.6	102.7	6.83	6.78	6.79	4.15	4.21	4.20	5	4.50
	17:32		Middle	2.5	29.70	29.70		8.55	8.55		25.72	25.72		104.7	100.3		6.92	6.62		4.21	4.24		4	
4/7/2015	21:30	Fine	Middle	2.5	27.90	27.90	27.90	8.21	8.21	8.21	29.62	29.62	29.62	73.4	74.0	73.7	4.88	4.92	4.90	2.84	2.68	2.71	3	3.00
	21:31		Middle	2.5	27.90	27.90		8.21	8.21		29.62	29.62		73.2	74.1		4.87	4.93		2.70	2.63		3	
6/7/2015	1:26	Cloudy	Middle	2.5	25.87	25.87	25.87	7.57	7.57	7.57	30.74	30.74	30.75	91.8	91.6	91.5	6.28	6.27	6.26	3.76	3.66	3.52	4	4.00
	1:27		Middle	2.5	25.86	25.86		7.57	7.57		30.75	30.75		91.6	91.0		6.26	6.22		3.29	3.35		4	
8/7/2015	10:38	Fine	Middle	2.5	26.60	26.60	26.70	8.20	8.20	8.21	32.19	32.19	32.13	76.2	77.8	76.5	5.09	5.20	5.11	3.17	3.15	3.12	2	2.50
	10:40		Middle	2.5	26.80	26.80		8.21	8.21		32.07	32.07		77.0	74.9		5.14	5.00		3.06	3.11		3	
10/7/2015	14:05	Fine	Middle	3.0	27.70	27.70	27.90	8.19	8.19	8.20	32.62	32.62	32.61	77.0	77.1	75.5	5.04	5.04	4.94	3.99	3.99	3.93	3	3.50
	14:07		Middle	3.0	28.10	28.10		8.21	8.21		32.60	32.60		75.0	73.0		4.90	4.77		3.88	3.87		4	
13/7/2015	17:05	Fine	Middle	2.5	28.80	28.80	28.95	8.20	8.20	8.21	31.79	31.79	31.78	75.8	75.1	75.2	4.89	4.84	4.85	8.53	8.43	8.38	9	9.50
	17:07		Middle	2.5	29.10	29.10		8.21	8.21		31.77	31.77		75.4	74.3		4.86	4.79		8.35	8.22		10	
15/7/2015	16:28	Cloudy	Middle	2.5	29.20	29.20	29.30	8.24	8.24	8.24	30.94	30.94	30.93	74.5	73.8	73.9	4.81	4.76	4.77	2.76	2.74	2.75	3	3.00
	16:30		Middle	2.5	29.40	29.40		8.24	8.24		30.92	30.92		73.8	73.3		4.76	4.73		2.74	2.75		3	
17/7/2015	21:10	Cloudy	Middle	2.5	27.41	27.41	27.38	7.56	7.56	7.57	30.73	30.73	30.75	79.4	79.3	79.5	5.12	5.11	5.13	2.29	2.30	2.27	5	4.50
	21:11		Middle	2.5	27.35	27.35		7.57	7.57		30.76	30.76		79.6	79.8		5.14	5.16		2.21	2.26		4	
20/7/2015	8:39	Cloudy	Middle	2.5	27.20	27.20	27.20	8.21	8.21	8.21	32.05	32.05	32.05	70.8	71.7	71.1	4.70	4.76	4.72	4.32	4.30	4.30	4	4.50
	8:41		Middle	2.5	27.20	27.20		8.21	8.21		32.04	32.04		71.1	70.9		4.72	4.70		4.29	4.29		5	
22/7/2015	-	Amber Rainstorm	Middle	-	-	-	-	-	-	-	-	-	-	-	-	-	-	-	-	-	-	-	-	
	-		Middle	-	-	-	-	-	-	-	-	-	-	-	-	-	-	-	-	-	-	-	-	-
25/7/2015	2:32	Cloudy	Middle	2.5	27.30	27.30	27.30	7.52	7.52	7.52	26.41	26.41	26.41	84.4	84.3	84.2	5.77	5.76	5.76	3.18	3.05	3.06	3	3.50
	2:33		Middle	2.5	27.29	27.29		7.52	7.52		26.41	26.41		84.2	84.0		5.76	5.74		3.02	2.98		4	

Remarks:
Single underline denotes exceedance over Action Level.
Double underline denotes exceedance over Limit Level.



**Water Monitoring Result at P3 - APA
Mid-Flood Tide**

Date	Time	Weather Condition	Sampling Depth		Water Temperature		pH			Salinity		DO Saturation		DO		Turbidity		Suspended Solids						
			m		°C		-		ppt		%		mg/L		NTU		mg/L							
					Value	Average	Value	Average	Value	Average	Value	Average	Value	Average	Value	Average	Value	Average						
29/6/2015	16:44	Fine	Middle	2.5	29.10	29.10	29.15	8.39	8.39	8.38	24.10	24.10	24.08	81.6	85.6	83.7	5.47	5.75	5.64	2.83	2.79	2.79	6	6.00
	16:46		Middle	2.5	29.20	29.20		8.36	8.36		24.06	24.06		84.9	82.6		5.70	5.64		2.77	2.76		6	
2/7/2015	17:34	Fine	Middle	2.5	28.70	28.70	28.80	8.56	8.56	8.56	25.65	25.65	25.65	103.0	103.7	102.5	6.90	6.94	6.85	2.64	2.63	2.60	3	4.00
	17:36		Middle	2.5	28.90	28.90		8.56	8.56		25.65	25.65		101.6	101.6		6.80	6.76		2.57	2.54		5	
4/7/2015	21:34	Fine	Middle	2.5	27.40	27.40	27.40	8.19	8.19	8.19	29.70	29.70	29.70	70.1	71.9	71.5	4.70	4.82	4.79	2.71	2.65	2.67	3	3.00
	21:35		Middle	2.5	27.40	27.40		8.19	8.19		29.70	29.70		72.9	71.0		4.89	4.75		2.69	2.61		3	
6/7/2015	1:30	Cloudy	Middle	2.5	25.80	25.80	25.86	7.50	7.50	7.50	30.86	30.86	30.86	87.0	86.8	86.7	5.95	5.93	5.92	2.83	2.72	2.71	2	2.50
	1:31		Middle	2.5	25.92	25.92		7.50	7.50		30.86	30.86		86.4	86.6		5.90	5.91		2.67	2.62		3	
8/7/2015	10:42	Fine	Middle	2.5	25.80	25.80	25.80	8.21	8.21	8.21	32.25	32.25	32.23	65.8	65.0	64.3	4.46	4.40	4.36	2.68	2.47	2.53	4	3.50
	10:44		Middle	2.5	25.80	25.80		8.20	8.20		32.21	32.21		63.6	62.7		4.31	4.26		2.47	2.49		3	
10/7/2015	14:09	Fine	Middle	3.0	26.80	26.80	26.95	8.21	8.21	8.20	32.69	32.69	32.69	72.3	71.5	70.3	4.81	4.75	4.67	2.76	2.75	2.75	3	3.00
	14:11		Middle	3.0	27.10	27.10		8.18	8.18		32.68	32.68		66.7	70.6		4.43	4.69		2.75	2.75		3	
13/7/2015	17:09	Fine	Middle	2.5	27.90	27.90	28.00	8.19	8.19	8.17	31.75	31.75	31.75	68.9	70.8	69.6	4.52	4.64	4.56	2.89	2.88	2.83	<2	<2
	17:11		Middle	2.5	28.10	28.10		8.14	8.14		31.75	31.75		69.1	69.6		4.53	4.56		2.80	2.76		<2	
15/7/2015	16:32	Cloudy	Middle	2.5	28.50	28.50	28.55	8.25	8.25	8.24	30.87	30.87	30.84	73.4	72.4	72.1	4.80	4.74	4.71	2.86	3.04	3.03	2	2.50
	16:34		Middle	2.5	28.60	28.60		8.23	8.23		30.81	30.81		71.4	71.0		4.67	4.64		3.02	3.19		3	
17/7/2015	21:15	Cloudy	Middle	2.5	28.08	28.08	28.09	7.58	7.58	7.58	30.29	30.29	30.28	85.0	85.1	85.2	5.52	5.53	5.54	2.45	2.47	2.45	6	5.50
	21:16		Middle	2.5	28.09	28.09		7.58	7.58		30.27	30.27		85.3	85.4		5.55	5.55		2.53	2.36		5	
20/7/2015	8:45	Cloudy	Middle	2.5	27.00	27.00	27.05	8.18	8.18	8.18	30.80	30.80	30.84	63.8	68.8	67.9	4.27	4.59	4.52	3.13	3.04	3.07	2	3.00
	8:47		Middle	2.5	27.10	27.10		8.17	8.17		30.88	30.88		70.5	68.5		4.70	4.50		3.02	3.07		4	
22/7/2015	-	Amber Rainstorm	Middle	-	-	-	-	-	-	-	-	-	-	-	-	-	-	-	-	-	-	-	-	
	-		Middle	-	-	-	-	-	-	-	-	-	-	-	-	-	-	-	-	-	-	-	-	
25/7/2015	2:37	Cloudy	Middle	2.5	27.19	27.19	88.70	7.50	7.50	7.51	26.44	26.44	26.44	75.4	75.3	75.2	5.17	5.16	5.15	3.64	3.91	3.81	3	2.50
	2:38		Middle	2.5	27.20	273.20		7.51	7.51		26.43	26.43		75.2	75.0		5.15	5.13		3.86	3.83		2	

Remarks:
Single underline denotes exceedance over Action Level.
Double underline denotes exceedance over Limit Level.



**Water Monitoring Result at P4 - SOC
Mid-Flood Tide**

Date	Time	Weather Condition	Sampling Depth		Water Temperature			pH			Salinity			DO Saturation		DO		Turbidity		Suspended Solids				
					°C		-		ppt		%		mg/L		NTU		mg/L							
			m	Value	Average	Value	Average	Value	Average	Value	Average	Value	Average	Value	Average	Value	Average	Value	Average					
29/6/2015	16:48	Fine	Middle	2.5	29.00	29.00	29.00	8.42	8.42	8.44	24.47	24.47	24.46	83.9	82.9	82.6	5.64	5.57	5.55	3.89	3.88	3.90	6	6.50
	16:50		Middle	2.5	29.00	29.00		8.46	8.46		24.45	24.45		81.8	81.9		5.50	5.50		3.86	3.95		7	
2/7/2015	17:38	Fine	Middle	2.5	29.00	29.00	29.05	8.54	8.54	8.54	25.83	25.83	25.84	98.0	101.4	98.2	6.52	6.75	6.54	2.74	2.74	2.74	5	4.50
	17:40		Middle	2.5	29.10	29.10		8.53	8.53		25.84	25.84		98.8	94.6		6.58	6.30		2.74	2.74		4	
4/7/2015	21:42	Fine	Middle	2.5	27.30	27.30	27.30	8.22	8.22	8.22	29.71	29.71	29.71	71.4	71.1	70.8	4.79	4.77	4.75	3.71	3.62	3.59	4	4.00
	21:43		Middle	2.5	27.30	27.30		8.22	8.22		29.71	29.71		70.2	70.3		4.71	4.72		3.54	3.49		4	
6/7/2015	1:34	Cloudy	Middle	2.5	25.82	25.82	25.82	7.53	7.53	7.53	30.06	30.06	30.06	95.3	95.2	95.2	6.55	6.54	6.53	2.13	2.29	2.18	<2	2.00
	1:35		Middle	2.5	25.82	25.82		7.53	7.53		30.06	30.06		95.1	95.0		6.53	6.51		2.19	2.10		2	
8/7/2015	10:46	Fine	Middle	2.5	25.60	25.60	25.65	8.21	8.21	8.22	32.35	32.35	32.34	66.4	65.8	65.5	4.52	4.46	4.45	2.83	2.85	2.81	5	4.00
	10:48		Middle	2.5	25.70	25.70		8.22	8.22		32.32	32.32		65.0	64.9		4.42	4.41		2.79	2.77		3	
10/7/2015	14:13	Fine	Middle	3.0	26.50	26.50	26.60	8.21	8.21	8.22	32.69	32.69	32.70	79.9	79.3	78.8	5.34	5.29	5.26	3.78	3.75	3.71	6	6.00
	14:15		Middle	3.0	26.70	26.70		8.23	8.23		32.70	32.70		77.3	78.8		5.16	5.26		3.64	3.68		6	
13/7/2015	17:13	Fine	Middle	2.5	27.80	27.80	27.85	8.18	8.18	8.20	31.76	31.76	31.76	77.9	80.1	78.3	5.12	5.26	5.14	4.40	4.40	4.36	2	2.00
	17:15		Middle	2.5	27.90	27.90		8.22	8.22		31.75	31.75		79.2	75.8		5.21	4.98		4.33	4.31		2	
15/7/2015	16:36	Cloudy	Middle	2.5	28.30	28.30	28.30	8.24	8.24	8.25	30.78	30.79	30.78	76.1	74.7	74.9	5.00	4.90	4.91	2.86	2.89	3.02	2	2.50
	16:38		Middle	2.5	28.30	28.30		8.25	8.25		30.77	30.77		74.8	73.8		4.91	4.81		3.13	3.20		3	
17/7/2015	21:24	Cloudy	Middle	2.5	28.32	28.32	28.31	7.60	7.60	7.60	30.63	30.63	30.64	86.8	86.6	86.4	5.61	5.59	5.58	4.13	3.80	3.89	5	5.50
	21:25		Middle	2.5	28.30	28.30		7.60	7.60		30.64	30.64		86.1	86.0		5.57	5.56		3.77	3.84		6	
20/7/2015	8:50	Cloudy	Middle	2.5	27.10	27.10	27.10	8.21	8.21	8.23	32.27	32.27	32.27	78.6	78.0	78.4	5.22	5.18	5.21	5.45	5.35	5.43	5	5.00
	8:52		Middle	2.5	27.10	27.10		8.24	8.24		32.27	32.27		79.1	77.9		5.25	5.17		5.47	5.44		5	
22/7/2015	-	Amber Rainstorm	Middle	-	-	-	-	-	-	-	-	-	-	-	-	-	-	-	-	-	-	-	-	
	-		Middle	-	-	-	-	-	-	-	-	-	-	-	-	-	-	-	-	-	-	-	-	
25/7/2015	2:41	Cloudy	Middle	2.5	27.20	27.20	27.20	7.52	7.52	7.52	26.37	26.37	26.37	84.8	84.7	84.7	5.81	5.80	5.80	3.37	3.27	3.29	4	3.50
	2:42		Middle	2.5	27.20	27.20		7.52	7.52		26.37	26.37		84.7	84.5		5.80	5.78		3.30	3.23		3	

Remarks:
Single underline denotes exceedance over Action Level.
Double underline denotes exceedance over Limit Level.



**Water Monitoring Result at P5 - WCT / RT / IT
Mid-Flood Tide**

Date	Time	Weather Condition	Sampling Depth		Water Temperature		pH		Salinity		DO Saturation		DO		Turbidity		Suspended Solids							
			m		°C		-		ppt		%		mg/L		NTU		mg/L							
					Value	Average	Value	Average	Value	Average	Value	Average	Value	Average	Value	Average	Value	Average						
29/6/2015	16:52	Fine	Middle	2.5	28.80	28.80	28.85	8.46	8.46	8.46	24.55	24.55	24.55	82.7	82.3	80.3	5.57	5.54	5.41	4.23	4.56	4.30	6	6.00
	16:54		Middle	2.5	28.90	28.90		8.46	8.46		24.54	24.54		79.3	76.9		5.34	5.19		4.37	4.05		6	
2/7/2015	17:42	Fine	Middle	2.5	29.00	29.00	29.05	8.52	8.52	8.52	25.90	25.90	25.88	97.1	96.9	96.2	6.46	6.46	6.40	3.86	3.84	3.88	5	5.50
	17:44		Middle	2.5	29.10	29.10		8.51	8.51		25.80	25.90		95.7	95.2		6.37	6.32		3.85	3.95		6	
4/7/2015	21:51	Fine	Middle	2.5	27.30	27.30	27.30	8.17	8.17	8.17	29.81	29.81	29.81	71.1	71.3	71.3	4.77	4.78	4.78	2.92	2.94	2.81	3	2.50
	21:52		Middle	2.5	27.30	27.30		8.17	8.17		29.82	29.81		70.5	72.3		4.73	4.84		2.77	2.61		2	
6/7/2015	1:44	Cloudy	Middle	2.5	25.72	25.72	25.73	7.55	7.55	7.55	31.12	31.12	31.12	91.8	91.7	91.6	6.28	6.27	6.26	2.51	2.41	2.27	2	2.50
	1:45		Middle	2.5	25.73	25.73		7.55	7.55		31.11	31.11		91.5	91.2		6.26	6.22		2.07	2.10		3	
8/7/2015	10:50	Fine	Middle	2.5	25.70	25.70	25.75	8.24	8.24	8.25	32.40	32.40	32.40	69.1	65.2	66.1	4.69	4.50	4.51	3.72	3.72	3.73	4	4.00
	10:52		Middle	2.5	25.80	25.80		8.26	8.26		32.39	32.39		65.6	64.6		4.46	4.39		3.73	3.73		4	
10/7/2015	14:17	Fine	Middle	3.0	26.30	26.30	26.45	8.25	8.25	8.26	32.73	32.73	32.73	74.4	73.8	73.8	4.99	4.94	4.94	4.57	4.49	4.54	5	5.50
	14:19		Middle	3.0	26.60	26.60		8.26	8.26		32.73	32.73		73.4	73.6		4.91	4.92		4.54	4.55		6	
13/7/2015	17:17	Fine	Middle	2.5	27.80	27.80	27.85	8.22	8.22	8.23	31.72	31.72	31.73	71.6	70.9	71.6	4.72	4.67	4.71	5.10	5.08	5.12	2	2.00
	17:19		Middle	2.5	27.90	27.90		8.23	8.23		31.74	31.74		72.1	71.6		4.75	4.71		5.22	5.09		<2	
15/7/2015	16:40	Cloudy	Middle	2.5	28.10	28.10	28.15	8.27	8.27	8.27	30.84	30.84	30.84	72.8	73.0	71.7	4.79	4.80	4.72	2.87	2.87	2.91	4	4.00
	16:42		Middle	2.5	28.20	28.20		8.27	8.27		30.83	30.83		71.1	70.0		4.67	4.61		2.94	2.95		4	
17/7/2015	21:29	Cloudy	Middle	2.5	28.21	28.21	28.24	7.60	7.60	7.60	30.66	30.66	30.67	87.8	87.7	87.7	5.63	5.62	5.62	3.31	3.36	3.04	5	5.00
	21:30		Middle	2.5	28.27	28.27		7.60	7.60		30.67	30.67		87.6	87.5		5.62	5.61		2.79	2.69		5	
20/7/2015	8:55	Cloudy	Middle	2.5	27.20	27.20	27.10	8.25	8.25	8.25	31.27	31.27	31.27	71.8	74.1	73.9	4.78	4.93	4.92	5.62	5.78	5.74	5	5.00
	8:57		Middle	2.5	27.00	27.00		8.25	8.25		31.27	31.27		74.2	75.5		4.93	5.02		5.77	5.79		5	
22/7/2015	-	Amber Rainstorm	Middle	-	-	-	-	-	-	-	-	-	-	-	-	-	-	-	-	-	-	-	-	
	-		Middle	-	-	-	-	-	-	-	-	-	-	-	-	-	-	-	-	-	-	-	-	
25/7/2015	2:48	Cloudy	Middle	2.5	27.26	27.26	27.26	7.51	7.51	7.51	26.52	26.52	26.52	79.0	78.8	78.7	5.40	5.39	5.39	3.58	3.55	3.53	4	4.00
	2:49		Middle	2.5	27.26	27.26		7.51	7.51		26.52	26.52		78.6	78.5		5.38	5.37		3.50	3.48		4	

Remarks:
Single underline denotes exceedance over Action Level.
Double underline denotes exceedance over Limit Level.



**Water Monitoring Result at RW21-P789 - Sun Hung Kai Centre
Mid-Flood Tide**

Date	Time	Weather Condition	Sampling Depth		Water Temperature		pH		Salinity		DO Saturation		DO		Turbidity		Suspended Solids							
			m		°C		-		ppt		%		mg/L		NTU		mg/L							
					Value	Average	Value	Average	Value	Average	Value	Average	Value	Average	Value	Average	Value	Average						
29/6/2015	17:14	Fine	Middle	3.5	28.70	28.70	28.80	8.41	8.41	8.42	24.29	24.29	24.26	72.5	73.3	74.6	4.90	4.95	5.04	3.27	3.24	3.20	3	3.00
	17:16		Middle	3.5	28.90	28.90		8.43	8.43		24.23	24.23		75.2	77.3		5.08	5.22		3.14	3.14		3	
2/7/2015	20:13	Fine	Middle	3.5	27.70	27.70	27.75	8.29	8.29	8.29	27.09	27.09	27.09	82.2	82.0	80.8	5.55	5.52	5.45	3.27	3.96	3.43	6	5.50
	20:14		Middle	3.5	27.80	27.80		8.29	8.29		27.09	27.09		78.3	80.7		5.28	5.44		3.30	3.19		5	
4/7/2015	19:45	Fine	Middle	3.0	27.60	27.60	27.75	8.10	8.10	8.10	29.28	29.28	29.28	74.9	76.1	75.0	5.01	5.08	5.01	2.66	2.78	2.74	<2	<u>2</u>
	19:46		Middle	3.0	27.90	27.90		8.10	8.10		29.28	29.28		74.8	74.3		4.99	4.96		2.82	2.68		<2	
6/7/2015	23:40	Cloudy	Middle	3.0	26.24	26.24	26.24	7.56	7.56	7.56	29.88	29.88	29.88	87.4	87.3	87.5	5.97	5.96	5.97	3.18	3.21	3.16	4	4.00
	23:41		Middle	3.0	26.24	26.24		7.56	7.56		29.88	29.88		87.5	87.6		5.98	5.98		3.16	3.10		4	
8/7/2015	11:06	Fine	Middle	3.5	25.60	25.60	25.60	8.25	8.25	8.25	32.15	32.15	32.12	62.2	61.3	62.3	4.24	4.18	4.24	2.73	2.76	2.69	5	4.50
	11:08		Middle	3.5	25.60	25.60		8.25	8.25		32.08	32.08		63.1	62.5		4.29	4.25		2.64	2.64		4	
10/7/2015	14:20	Fine	Middle	3.5	26.30	26.30	26.30	8.24	8.24	8.25	32.80	32.80	32.80	75.1	75.5	74.9	5.02	5.04	5.01	5.02	5.26	5.18	8	7.50
	14:22		Middle	3.5	26.30	26.30		8.26	8.26		32.80	32.80		75.1	74.0		5.01	4.96		5.29	5.13		7	
13/7/2015	17:45	Fine	Middle	3.0	27.40	27.40	27.45	8.22	8.22	8.23	31.70	31.70	31.70	76.4	76.6	76.1	5.05	5.08	5.06	4.19	4.21	4.19	<2	<u>2</u>
	17:47		Middle	3.0	27.50	27.50		8.23	8.23		31.70	31.70		75.5	75.9		5.07	5.03		4.19	4.17		<2	
15/7/2015	19:05	Cloudy	Middle	3.0	27.58	27.58	27.59	7.38	7.38	7.30	27.15	27.14	27.16	94.9	95.3	95.4	6.43	6.45	6.46	3.89	3.97	3.99	6	6.50
	19:06		Middle	3.0	27.59	27.59		7.21	7.21		27.18	27.18		95.6	95.8		6.47	6.49		4.07	4.03		7	
17/7/2015	19:11	Cloudy	Middle	3.0	27.42	27.42	27.43	7.55	7.55	7.55	29.99	29.99	29.99	83.9	83.7	83.3	5.61	5.59	5.56	4.22	4.39	4.25	5	6.00
	19:12		Middle	3.0	27.43	27.43		7.55	7.55		29.98	29.98		82.0	83.5		5.46	5.57		4.20	4.17		7	
20/7/2015	9:25	Cloudy	Middle	3.0	26.60	26.60	26.60	8.19	8.19	8.19	31.69	31.69	31.68	64.2	64.0	63.9	4.33	4.32	4.30	4.40	4.40	4.41	4	4.00
	9:27		Middle	3.0	26.60	26.60		8.19	8.19		31.67	31.67		62.7	64.7		4.21	4.34		4.41	4.42		4	
22/7/2015	-	Amber Rainstorm	Middle	-	-	-	-	-	-	-	-	-	-	-	-	-	-	-	-	-	-	-	-	
	-		Middle	-	-	-	-	-	-	-	-	-	-	-	-	-	-	-	-	-	-	-	-	
25/7/2015	2:06	Cloudy	Middle	3.5	27.32	27.32	27.32	7.52	7.52	7.52	27.28	27.28	27.28	80.1	79.8	79.6	5.77	5.47	5.53	2.94	3.04	2.98	3	3.00
	2:07		Middle	3.5	27.31	27.31		7.51	7.51		27.28	27.28		79.3	79.1		5.44	5.42		2.96	2.98		3	

Remarks:
Single underline denotes exceedance over Action Level.
Double underline denotes exceedance over Limit Level.



**Water Monitoring Result at WSD19 - Sheung Wan
Mid-Flood Tide**

Date	Time	Weather Condition	Sampling Depth		Water Temperature		pH		Salinity		DO Saturation		DO		Turbidity		Suspended Solids							
			m		°C		-		ppt		%		mg/L		NTU		mg/L							
					Value	Average	Value	Average	Value	Average	Value	Average	Value	Average	Value	Average	Value	Average						
29/6/2015	16:03	Fine	Middle	3.5	29.80	29.80	29.85	8.61	8.61	8.63	23.03	23.03	23.03	104.3	103.2	102.7	6.96	6.89	6.85	4.60	4.57	4.64	7	7.00
	16:05		Middle	3.5	29.90	29.90		8.65	8.65		23.02	23.02		102.0	101.1		6.81	6.75		4.56	4.82		7	
2/7/2015	19:10	Fine	Middle	2.5	28.60	28.60	28.63	8.13	8.13	8.14	27.24	27.24	27.24	80.8	80.6	80.0	5.36	5.30	5.29	3.75	3.65	3.71	5	5.50
	19:11		Middle	2.5	28.70	28.60		8.15	8.15		27.24	27.24		79.0	79.4		5.24	5.26		3.70	3.73		6	
4/7/2015	20:35	Fine	Middle	2.5	27.30	27.30	27.35	7.91	7.91	7.93	29.52	29.52	29.53	71.9	73.6	73.1	4.80	4.90	4.87	4.90	4.63	4.71	3	3.00
	20:36		Middle	2.5	27.40	27.40		7.95	7.95		29.54	29.54		74.6	72.4		4.97	4.82		4.61	4.70		3	
6/7/2015	0:27	Cloudy	Middle	3.0	26.10	26.10	26.12	7.58	7.58	7.58	30.24	30.24	30.24	94.4	94.3	94.2	6.44	6.43	6.42	4.98	4.87	4.86	4	4.00
	0:28		Middle	3.0	26.13	26.13		7.58	7.58		30.24	30.24		94.2	94.0		6.43	6.39		4.80	4.77		4	
8/7/2015	9:47	Fine	Middle	3.5	26.10	26.10	26.20	8.19	8.19	8.18	32.16	32.16	32.16	54.8	54.5	54.3	3.70	3.68	3.67	3.87	3.95	3.87	4	4.00
	9:49		Middle	3.5	26.30	26.30		8.17	8.17		32.16	32.16		54.2	53.7		3.66	3.62		3.88	3.79		4	
10/7/2015	13:18	Fine	Middle	3.5	27.10	27.10	27.40	8.42	8.42	8.33	32.90	32.90	32.91	69.3	66.5	65.9	4.64	4.37	4.35	3.24	3.14	3.12	4	4.00
	13:20		Middle	3.5	27.70	27.70		8.24	8.24		32.91	32.91		64.1	63.8		4.21	4.19		3.06	3.04		4	
13/7/2015	16:03	Fine	Middle	3.0	27.70	27.70	27.90	8.20	8.20	8.20	31.75	31.75	31.75	66.6	67.3	66.5	4.37	4.42	4.37	5.01	4.92	4.89	3	4.00
	16:05		Middle	3.0	28.10	28.10		8.19	8.19		31.74	31.74		65.7	66.5		4.31	4.37		4.86	4.76		5	
15/7/2015	20:04	Cloudy	Middle	3.0	27.99	27.99	28.05	7.58	7.58	7.58	29.66	29.66	29.66	92.8	93.3	93.1	6.15	6.18	6.17	6.34	6.44	6.38	5	5.00
	20:05		Middle	3.0	28.11	28.11		7.58	7.58		29.66	29.66		93.3	93.1		6.18	6.16		6.61	6.12		5	
17/7/2015	20:03	Cloudy	Middle	3.0	27.17	27.17	27.17	7.39	7.39	7.40	30.52	30.52	30.52	93.1	93.0	93.1	6.24	6.23	6.24	5.02	4.48	4.63	6	6.00
	20:04		Middle	3.0	27.17	27.17		7.40	7.40		30.51	30.51		93.3	92.8		6.26	6.22		4.43	4.59		6	
20/7/2015	7:49	Cloudy	Middle	3.5	26.90	26.90	27.00	8.20	8.20	8.19	32.06	32.06	32.06	58.3	57.1	57.2	3.88	3.80	3.81	7.76	7.89	7.87	4	4.50
	7:51		Middle	3.5	27.10	27.10		8.17	8.17		32.05	32.05		57.0	56.5		3.79	3.75		7.91	7.93		5	
22/7/2015	-	Amber Rainstorm	Middle	-	-	-	-	-	-	-	-	-	-	-	-	-	-	-	-	-	-	-	-	
	-		Middle	-	-	-	-	-	-	-	-	-	-	-	-	-	-	-	-	-	-	-	-	
25/7/2015	3:09	Cloudy	Middle	3.0	27.26	27.26	27.28	7.55	7.55	7.56	24.92	24.92	24.93	89.5	89.4	89.3	6.17	6.17	6.16	3.81	3.85	3.67	4	4.00
	3:10		Middle	3.0	27.29	27.29		7.56	7.56		24.93	24.93		89.1	89.0		6.14	6.14		3.50	3.53		4	

Remarks:
Single underline denotes exceedance over Action Level.
Double underline denotes exceedance over Limit Level.



**Water Monitoring Result at C7 - Windsor House
Mid-Ebb Tide**

Date	Time	Weather Condition	Sampling Depth		Water Temperature			pH			Salinity		DO Saturation		DO		Turbidity		Suspended Solids					
					°C			-			ppt		%		mg/L		NTU		mg/L					
					Value	Average		Value	Average		Value	Average	Value	Average	Value	Average	Value	Average	Value	Average				
29/6/2015	10:15	Fine	Middle	-	29.30	29.30	29.35	8.32	8.32	8.32	23.69	23.69	23.69	77.4	79.4	78.0	5.19	5.32	5.24	3.08	3.19	3.12	4	3.50
	10:17		Middle	-	29.40	29.40		8.31	8.31		23.68	23.68		77.4	77.6		5.19	5.26		3.19	3.02		3	
2/7/2015	10:35	Fine	Middle	-	27.90	27.90	28.00	8.21	8.21	8.19	27.86	27.86	27.86	65.3	65.7	65.4	4.39	4.41	4.39	5.03	5.04	5.14	4	5.00
	10:37		Middle	-	28.10	28.10		8.16	8.16		27.86	27.86		65.4	65.0		4.39	4.35		5.21	5.29		6	
4/7/2015	14:14	Fine	Middle	-	27.80	27.80	28.00	8.06	8.06	8.06	29.65	29.65	29.63	74.7	74.1	73.9	4.96	4.91	4.90	1.85	1.85	1.86	<2	<2
	14:16		Middle	-	28.20	28.20		8.05	8.05		29.61	29.61		73.3	73.3		4.86	4.86		1.86	1.86		<2	
6/7/2015	14:50	Fine	Middle	-	27.30	27.30	27.40	8.13	8.13	8.12	31.20	31.20	31.20	73.6	74.9	73.5	4.89	4.98	4.88	3.02	3.00	2.96	4	3.50
	14:52		Middle	-	27.50	27.50		8.11	8.11		31.20	31.20		72.4	73.2		4.81	4.85		2.89	2.94		3	
8/7/2015	-	Fine	Middle	-	-	-		-	-		-	-		-	-		-	-		-	-		-	
	-		Middle	-	-	-		-	-		-	-		-	-		-	-		-	-		-	
10/7/2015	-	Cloudy	Middle	-	-	-		-	-		-	-		-	-		-	-		-	-		-	
	-		Middle	-	-	-		-	-		-	-		-	-		-	-		-	-		-	
13/7/2015	-	Fine	Middle	-	-	-		-	-		-	-		-	-		-	-		-	-		-	
	-		Middle	-	-	-		-	-		-	-		-	-		-	-		-	-			
15/7/2015	12:25	Fine	Middle	-	28.50	28.50	28.65	8.09	8.09	8.09	31.50	31.50	31.50	68.1	69.2	69.1	4.43	4.50	4.49	1.53	1.56	1.56	3	3.50
	12:27		Middle	-	28.80	28.80		8.08	8.08		31.50	31.50		68.8	70.1		4.48	4.56		1.56	1.60		4	
17/7/2015	11:05	Fine	Middle	-	27.80	27.80	27.70	8.17	8.17	8.16	31.21	31.21	31.21	67.6	68.6	68.8	4.48	4.50	4.54	1.93	1.95	1.93	3	3.50
	11:07		Middle	-	27.60	27.60		8.14	8.14		31.21	31.21		70.1	68.9		4.65	4.52		1.96	1.89		4	
20/7/2015	15:32	Cloudy	Middle	-	26.70	26.70	26.75	8.08	8.08	8.09	31.68	31.68	31.71	64.8	65.4	64.0	4.34	4.38	4.29	1.51	1.64	1.66	<2	<2
	15:34		Middle	-	26.80	26.80		8.09	8.09		31.74	31.74		63.4	62.5		4.24	4.19		1.74	1.75		<2	
22/7/2015	-	Amber Rainstorm	Middle	-	-	-		-	-		-	-		-	-		-	-		-	-		-	
	-		Middle	-	-	-		-	-		-	-		-	-		-	-		-	-			
25/7/2015	9:06	Cloudy	Middle	-	27.10	27.10	27.05	7.99	7.99	8.00	24.94	24.94	24.90	67.7	66.5	66.7	4.09	4.00	4.03	1.51	1.51	1.79	2	2.00
	9:08		Middle	-	27.00	27.00		8.01	8.01		24.86	24.86		66.5	66.1		4.01	4.02		2.07	2.06		2	

Remarks:
Single underline denotes exceedance over Action Level.
Double underline denotes exceedance over Limit Level.



**Water Monitoring Result at C1 - HKCEC
Mid-Ebb Tide**

Date	Time	Weather Condition	Sampling Depth		Water Temperature			pH			Salinity		DO Saturation		DO		Turbidity		Suspended Solids					
					°C			-			ppt		%		mg/L		NTU		mg/L					
					Value	Average		Value	Average		Value	Average	Value	Average	Value	Average	Value	Average	Value	Average				
29/6/2015	10:55	Fine	Middle	2.5	28.40	28.40	28.40	8.43	8.43	8.43	22.55	22.56	22.57	76.0	74.1	73.3	5.21	5.08	5.02	3.71	3.65	3.59	5	5.00
	10:57		Middle	2.5	28.40	28.40		8.42	8.42		22.58	22.58		72.0	70.9		4.93	4.86		3.50	3.49		5	
2/7/2015	14:35	Fine	Middle	2.5	28.60	28.60	28.65	8.44	8.44	8.44	25.92	25.92	25.92	90.5	91.7	92.4	6.06	6.17	6.20	3.99	3.99	3.98	3	3.50
	14:37		Middle	2.5	28.70	28.70		8.44	8.44		25.92	25.92		93.9	93.5		6.29	6.26		3.98	3.97		4	
4/7/2015	16:00	Fine	Middle	2.5	27.70	27.70	27.75	8.25	8.25	8.26	28.76	28.76	28.76	73.1	74.1	73.6	4.90	4.96	4.93	2.97	2.78	2.82	2	2.00
	16:02		Middle	2.5	27.80	27.80		8.26	8.26		28.75	28.75		74.1	73.2		4.97	4.90		2.77	2.76		2	
6/7/2015	15:51	Fine	Middle	3.5	26.80	26.80	26.85	8.28	8.28	8.28	30.10	30.10	30.11	77.1	77.6	77.5	5.21	5.24	5.23	2.37	2.38	2.61	3	3.00
	15:53		Middle	3.5	26.90	26.90		8.27	8.27		30.12	30.12		77.9	77.3		5.26	5.22		3.00	2.67		3	
8/7/2015	16:56	Fine	Middle	2.5	26.50	26.50	26.55	8.29	8.29	8.29	32.36	32.36	32.36	73.2	72.3	72.5	4.90	4.84	4.85	3.13	3.04	2.99	3	3.50
	16:58		Middle	2.5	26.60	26.60		8.28	8.28		32.36	32.36		73.7	70.6		4.94	4.73		2.89	2.88		4	
10/7/2015	17:47	Cloudy	Middle	2.5	26.20	26.20	26.25	8.26	8.26	8.26	32.71	32.71	32.71	63.3	61.8	61.3	4.25	4.15	4.12	2.45	2.38	2.41	6	5.00
	17:49		Middle	2.5	26.30	26.30		8.26	8.26		32.70	32.70		60.3	59.8		4.05	4.02		2.42	2.40		4	
13/7/2015	10:17	Fine	Middle	2.5	27.30	27.30	27.35	8.24	8.24	8.24	31.87	31.87	31.87	67.4	69.1	68.7	4.47	4.58	4.55	2.73	2.74	2.81	<2	<2
	10:19		Middle	2.5	27.40	27.40		8.23	8.23		31.86	31.86		69.1	69.1		4.58	4.57		2.79	2.97		<2	
15/7/2015	11:20	Fine	Middle	2.5	27.80	27.80	27.85	8.26	8.26	8.26	31.25	31.25	31.25	62.0	61.2	60.8	4.09	4.04	4.01	3.39	3.37	3.34	2	2.50
	11:22		Middle	2.5	27.90	27.90		8.26	8.26		31.25	31.25		60.4	59.5		3.98	3.91		3.31	3.29		3	
17/7/2015	14:56	Fine	Middle	2.5	27.50	27.50	27.50	8.26	8.26	8.26	30.67	30.67	30.63	67.3	68.3	66.0	4.48	4.55	4.39	3.22	3.23	3.21	2	2.50
	14:58		Middle	2.5	27.50	27.50		8.26	8.26		30.58	30.58		64.4	63.8		4.28	4.25		3.23	3.14		3	
20/7/2015	14:40	Cloudy	Middle	3.0	26.80	26.80	26.85	8.26	8.26	8.26	31.07	31.07	31.04	74.7	73.5	73.6	4.98	4.90	4.91	4.16	4.32	4.23	5	5.00
	14:42		Middle	3.0	26.90	26.90		8.26	8.26		31.00	31.00		72.9	73.2		4.89	4.88		4.20	4.22		5	
22/7/2015	-	Amber Rainstorm	Middle	-	-	-		-	-		-	-		-	-		-	-		-	-		-	
	-		Middle	-	-	-		-	-		-	-		-	-		-	-		-	-		-	
25/7/2015	8:16	Cloudy	Middle	2.5	27.70	27.70	27.70	8.16	8.16	8.16	25.11	25.11	25.11	69.4	70.1	68.6	4.74	4.79	4.69	2.75	2.75	2.78	3	2.50
	8:18		Middle	2.5	27.70	27.70		8.15	8.15		25.11	25.11		68.2	66.5		4.66	4.55		2.77	2.86		2	

Remarks:
Single underline denotes exceedance over Action Level.
Double underline denotes exceedance over Limit Level.



**Water Monitoring Result at P1 - HKCEC Phase I
Mid-Ebb Tide**

Date	Time	Weather Condition	Sampling Depth		Water Temperature			pH			Salinity		DO Saturation		DO		Turbidity		Suspended Solids					
					°C			-			ppt		%		mg/L		NTU		mg/L					
					Value	Average		Value	Average		Value	Average	Value	Average	Value	Average	Value	Average	Value	Average				
29/6/2015	11:17	Fine	Middle	2.5	28.50	28.50	28.55	8.34	8.34	8.36	23.02	23.02	23.03	80.5	76.4	75.8	5.49	5.21	5.17	3.04	3.03	3.05	5	5.50
	11:19		Middle	2.5	28.60	28.60		8.38	8.38		23.04	23.04		73.9	72.5		5.04	4.95		3.00	3.11		6	
2/7/2015	14:15	Fine	Middle	2.5	29.90	29.90	29.90	8.46	8.46	8.45	26.01	26.01	26.01	99.5	98.5	98.6	6.51	6.43	6.44	2.48	2.46	2.42	4	4.00
	14:17		Middle	2.5	29.90	29.90		8.44	8.44		26.00	26.00		99.2	97.2		6.47	6.34		2.37	2.37		4	
4/7/2015	15:44	Fine	Middle	2.5	29.20	29.20	29.35	8.21	8.21	8.24	28.73	28.73	28.80	78.3	80.8	79.4	5.12	5.27	5.18	2.71	2.72	2.73	3	2.50
	15:46		Middle	2.5	29.50	29.50		8.26	8.26		28.86	28.86		80.6	77.8		5.26	5.08		2.73	2.74		2	
6/7/2015	15:35	Fine	Middle	3.5	27.30	27.30	27.50	8.21	8.21	8.24	30.16	30.16	30.15	83.8	83.3	79.8	5.59	5.56	5.32	2.35	2.36	2.36	3	3.00
	15:37		Middle	3.5	27.70	27.70		8.26	8.26		30.14	30.14		73.8	78.1		4.92	5.20		2.36	2.36		3	
8/7/2015	16:40	Fine	Middle	2.5	26.80	26.80	26.95	8.23	8.23	8.25	32.41	32.41	32.35	76.0	76.5	75.8	5.06	5.09	5.04	3.69	3.71	3.67	3	3.50
	16:42		Middle	2.5	27.10	27.10		8.27	8.27		32.28	32.28		76.0	74.6		5.05	4.96		3.64	3.64		4	
10/7/2015	17:31	Cloudy	Middle	2.5	27.70	27.70	27.70	8.21	8.21	8.22	32.89	32.89	32.86	65.7	65.8	65.7	4.32	4.32	4.32	3.69	3.71	3.59	5	5.00
	17:33		Middle	2.5	27.70	27.70		8.22	8.22		32.83	32.83		66.0	65.3		4.33	4.29		3.56	3.38		5	
13/7/2015	10:05	Fine	Middle	2.5	28.20	28.20	28.30	8.21	8.21	8.22	32.06	32.06	32.04	62.0	61.4	61.3	4.04	4.00	3.99	2.54	2.63	2.53	<2	<2
	10:07		Middle	2.5	28.40	28.40		8.22	8.22		32.01	32.01		61.2	60.5		3.99	3.93		2.56	2.40		<2	
15/7/2015	11:04	Fine	Middle	2.5	28.30	28.30	28.40	8.21	8.21	8.22	31.37	31.37	31.36	74.1	77.3	76.1	4.84	5.04	4.96	2.74	2.74	2.74	5	4.00
	11:06		Middle	2.5	28.50	28.50		8.23	8.23		31.34	31.34		77.0	76.0		5.02	4.95		2.74	2.74		3	
17/7/2015	14:40	Fine	Middle	2.5	28.60	28.60	28.70	8.25	8.25	8.26	30.09	30.09	30.38	58.6	56.8	56.6	3.82	3.70	3.68	3.64	3.70	3.71	3	3.50
	14:42		Middle	2.5	28.80	28.80		8.26	8.26		30.67	30.67		55.9	54.9		3.62	3.58		3.72	3.76		4	
20/7/2015	14:20	Cloudy	Middle	3.0	27.00	27.00	27.00	8.25	8.25	8.26	31.78	31.78	31.84	77.2	77.7	77.3	5.17	5.20	5.19	4.51	4.90	4.60	4	5.00
	14:22		Middle	3.0	27.00	27.00		8.26	8.26		31.89	31.89		78.0	76.1		5.23	5.16		4.28	4.72		6	
22/7/2015	-	Amber Rainstorm	Middle	-	-	-		-	-		-	-		-	-		-	-		-	-		-	
	-		Middle	-	-	-		-	-		-	-		-	-		-	-		-	-		-	
25/7/2015	8:00	Cloudy	Middle	2.5	27.20	27.20	27.20	8.02	8.02	8.05	24.88	24.88	24.90	70.6	70.9	71.3	4.88	4.90	4.93	3.72	3.72	3.73	3	2.50
	8:02		Middle	2.5	27.20	27.20		8.08	8.08		24.92	24.92		71.9	71.7		4.97	4.95		3.73	3.73		2	

Remarks:
Single underline denotes exceedance over Action Level.
Double underline denotes exceedance over Limit Level.



**Water Monitoring Result at P3 - APA
Mid-Ebb Tide**

Date	Time	Weather Condition	Sampling Depth		Water Temperature			pH			Salinity		DO Saturation		DO		Turbidity			Suspended Solids				
					°C			-			ppt		%		mg/L		NTU			mg/L				
					Value	Average		Value	Average		Value	Average	Value	Average	Value	Average	Value	Average	Value	Average	Value	Average		
29/6/2015	11:10	Fine	Middle	2.5	28.60	28.60	28.65	8.39	8.39	8.39	22.72	22.72	22.70	71.4	70.7	70.7	4.89	4.83	4.84	3.13	3.15	3.17	4	4.00
	11:12		Middle	2.5	28.70	28.70		8.38	8.38		22.68	22.68		70.4	70.2		4.82	4.81		3.18	3.20		4	
2/7/2015	14:30	Fine	Middle	2.5	29.20	29.20	29.25	8.45	8.45	8.45	26.88	26.88	26.88	95.3	95.1	95.7	6.34	6.31	6.36	2.52	2.52	2.51	3	3.50
	14:32		Middle	2.5	29.30	29.30		8.45	8.45		26.88	26.88		97.0	95.4		6.44	6.33		2.51	2.48		4	
4/7/2015	15:48	Fine	Middle	2.5	28.20	28.20	28.25	8.29	8.29	8.29	28.63	28.63	28.62	71.4	73.0	72.3	4.75	4.85	4.81	2.71	2.85	2.80	3	2.50
	15:50		Middle	2.5	28.30	28.30		8.29	8.29		28.60	28.60		73.1	71.8		4.86	4.79		2.89	2.75		2	
6/7/2015	15:39	Fine	Middle	3.5	27.00	27.00	27.10	8.28	8.28	8.28	30.02	30.02	30.02	81.6	82.2	81.5	5.49	5.53	5.48	2.92	2.66	2.69	3	3.00
	15:41		Middle	3.5	27.20	27.20		8.28	8.28		30.01	30.01		81.4	80.7		5.47	5.42		2.55	2.63		3	
8/7/2015	16:44	Fine	Middle	2.5	26.20	26.20	26.25	8.30	8.30	8.31	32.13	32.13	32.12	78.1	77.0	77.2	5.27	5.19	5.21	3.53	3.51	3.51	3	3.50
	16:46		Middle	2.5	26.30	26.30		8.31	8.31		32.11	32.11		77.5	76.3		5.22	5.14		3.51	3.50		4	
10/7/2015	17:35	Cloudy	Middle	2.5	26.40	26.40	26.50	8.22	8.22	8.22	32.73	32.73	32.73	67.6	65.4	65.2	4.52	4.38	4.36	2.30	2.31	2.30	4	4.00
	17:37		Middle	2.5	26.60	26.60		8.22	8.22		32.72	32.72		65.7	61.9		4.40	4.14		2.29	2.28		4	
13/7/2015	10:08	Fine	Middle	2.5	27.60	27.60	27.70	8.23	8.23	8.24	31.97	31.97	31.89	69.7	70.0	69.2	4.59	4.61	4.56	2.28	2.28	2.28	<2	<2
	10:10		Middle	2.5	27.80	27.80		8.24	8.24		31.81	31.81		70.1	67.0		4.62	4.42		2.27	2.27		<2	
15/7/2015	11:08	Fine	Middle	2.5	27.80	27.80	27.85	8.25	8.25	8.26	31.37	31.37	31.24	75.6	73.6	75.5	5.00	4.87	4.99	2.73	2.64	2.61	2	2.50
	11:10		Middle	2.5	27.90	27.90		8.27	8.27		31.11	31.11		76.9	75.9		5.07	5.01		2.55	2.53		3	
17/7/2015	14:44	Fine	Middle	2.5	28.00	28.00	28.05	8.27	8.27	8.27	30.69	30.69	30.68	67.3	66.6	67.6	4.44	4.39	4.46	4.32	4.30	4.37	3	3.00
	14:46		Middle	2.5	28.10	28.10		8.27	8.27		30.66	30.66		67.6	68.7		4.46	4.53		4.35	4.49		3	
20/7/2015	14:25	Cloudy	Middle	3.0	26.70	26.70	26.65	8.26	8.26	8.26	30.92	30.92	30.91	78.4	77.7	77.9	5.25	5.21	5.22	5.05	5.00	4.93	5	5.50
	14:27		Middle	3.0	26.60	26.60		8.26	8.26		30.90	30.90		78.1	77.3		5.24	5.18		4.84	4.84		6	
22/7/2015	-	Amber Rainstorm	Middle	-	-	-		-	-		-	-		-	-		-	-		-	-		-	
	-		Middle	-	-	-		-	-		-	-		-	-		-	-		-	-		-	
25/7/2015	8:04	Cloudy	Middle	2.5	27.20	27.20	27.20	8.10	8.10	8.12	24.97	24.97	24.97	75.2	74.5	74.0	5.19	5.14	5.11	3.01	3.00	3.00	2	2.50
	8:06		Middle	2.5	27.20	27.20		8.13	8.13		24.97	24.97		73.9	72.2		5.11	4.99		3.00	3.00		3	

Remarks:
Single underline denotes exceedance over Action Level.
Double underline denotes exceedance over Limit Level.



**Water Monitoring Result at P4 - SOC
Mid-Ebb Tide**

Date	Time	Weather Condition	Sampling Depth		Water Temperature			pH			Salinity		DO Saturation		DO		Turbidity		Suspended Solids					
					°C			-			ppt		%		mg/L		NTU		mg/L					
					Value	Average		Value	Average		Value	Average	Value	Average	Value	Average	Value	Average	Value	Average				
29/6/2015	11:03	Fine	Middle	2.5	28.60	28.60	28.65	8.42	8.42	8.42	22.57	22.48	22.54	71.9	69.8	68.6	4.90	4.72	4.68	2.55	2.53	2.52	4	5.00
	11:05		Middle	2.5	28.70	28.70		8.41	8.41		22.54	22.55		67.8	65.0		4.62	4.49		2.49	2.51		6	
2/7/2015	14:25	Fine	Middle	2.5	28.90	28.90	28.90	8.44	8.44	8.45	26.00	26.00	26.00	93.0	92.9	92.1	6.20	6.19	6.14	2.28	2.27	2.27	3	3.50
	14:27		Middle	2.5	28.90	28.90		8.45	8.45		26.00	26.00		90.8	91.5		6.05	6.10		2.27	2.27		4	
4/7/2015	15:52	Fine	Middle	2.5	28.00	28.00	28.05	8.28	8.28	8.28	28.58	28.58	28.58	71.1	70.9	72.2	4.75	4.73	4.82	1.77	1.78	1.86	2	2.00
	15:54		Middle	2.5	28.10	28.10		8.27	8.27		28.58	28.58		73.3	73.3		4.89	4.89		1.93	1.94		<2	
6/7/2015	15:43	Fine	Middle	3.5	26.90	26.90	26.95	8.28	8.28	8.29	29.98	29.98	29.98	82.2	81.7	80.1	5.54	5.51	5.42	2.52	2.53	2.58	2	2.00
	15:45		Middle	3.5	27.00	27.00		8.29	8.29		29.97	29.97		79.4	76.9		5.46	5.18		2.62	2.63		2	
8/7/2015	16:48	Fine	Middle	2.5	26.10	26.10	26.15	8.30	8.30	8.30	32.22	32.22	32.22	76.4	75.4	74.6	5.16	5.08	5.03	2.72	2.73	2.77	4	3.50
	16:50		Middle	2.5	26.20	26.20		8.30	8.30		32.21	32.21		73.5	73.2		4.96	4.93		2.84	2.77		3	
10/7/2015	17:39	Cloudy	Middle	2.5	26.30	26.30	26.35	8.24	8.24	8.25	32.57	32.57	32.58	66.9	68.2	67.4	4.48	4.57	4.52	2.64	2.56	2.57	5	4.00
	17:41		Middle	2.5	26.40	26.40		8.25	8.25		32.58	32.58		67.4	67.0		4.52	4.49		2.53	2.53		3	
13/7/2015	10:11	Fine	Middle	2.5	27.40	27.40	27.40	8.24	8.24	8.24	31.81	31.81	31.81	71.1	73.5	71.9	4.76	4.87	4.78	3.04	3.00	2.96	<2	2.00
	10:12		Middle	2.5	27.40	27.40		8.24	8.24		31.82	31.81		73.0	70.1		4.84	4.64		2.87	2.92		2	
15/7/2015	11:12	Fine	Middle	2.5	27.60	27.60	27.65	8.27	8.27	8.27	31.16	31.16	31.15	68.1	69.8	68.8	4.51	4.62	4.56	2.14	2.14	2.14	2	2.50
	11:14		Middle	2.5	27.70	27.70		8.27	8.27		31.14	31.14		69.2	68.2		4.58	4.51		2.14	2.14		3	
17/7/2015	14:48	Fine	Middle	2.5	27.70	27.70	27.75	8.27	8.27	8.27	30.67	30.67	30.66	71.7	71.4	71.4	4.76	4.73	4.74	3.65	3.69	3.67	3	3.50
	14:50		Middle	2.5	27.80	27.80		8.27	8.27		30.65	30.65		71.2	71.3		4.72	4.73		3.67	3.65		4	
20/7/2015	14:30	Cloudy	Middle	3.0	26.60	26.60	26.65	8.26	8.26	8.26	31.77	31.77	31.89	73.8	75.9	75.1	4.94	5.08	5.04	4.41	4.40	4.35	4	5.00
	14:32		Middle	3.0	26.70	26.70		8.26	8.26		32.01	32.01		75.7	75.1		5.07	5.05		4.31	4.29		6	
22/7/2015	-	Amber Rainstorm	Middle	-	-	-	-	-	-	-	-	-	-	-	-	-	-	-	-	-	-	-	-	
	-		Middle	-	-	-	-	-	-	-	-	-	-	-	-	-	-	-	-	-	-	-	-	-
25/7/2015	8:08	Cloudy	Middle	2.5	27.10	27.10	27.10	8.14	8.14	8.15	24.94	24.94	24.94	74.3	74.5	74.0	5.14	5.15	5.12	3.14	3.14	3.09	3	3.00
	8:10		Middle	2.5	27.10	27.10		8.15	8.15		24.94	24.94		74.0	73.3		5.11	5.07		3.03	3.06		3	

Remarks:
Single underline denotes exceedance over Action Level.
Double underline denotes exceedance over Limit Level.



**Water Monitoring Result at P5 - WCT / RT / IT
Mid-Ebb Tide**

Date	Time	Weather Condition	Sampling Depth		Water Temperature			pH			Salinity		DO Saturation		DO		Turbidity		Suspended Solids					
					°C			-			ppt		%		mg/L		NTU		mg/L					
					Value	Average		Value	Average		Value	Average	Value	Average	Value	Average	Value	Average	Value	Average				
29/6/2015	10:50	Fine	Middle	2.5	28.50	28.50	28.60	8.45	8.45	8.45	22.69	22.70	22.70	76.3	74.1	73.3	5.20	5.05	4.99	2.32	2.30	2.27	4	4.00
	10:52		Middle	2.5	28.70	28.70		8.45	8.45		22.70	22.70		72.8	70.0		4.95	4.77		2.23	2.21		4	
2/7/2015	14:20	Fine	Middle	2.5	28.70	28.70	28.80	8.44	8.44	8.44	26.90	26.90	26.90	92.3	92.1	91.5	6.17	6.15	6.11	2.51	2.64	2.64	4	4.50
	14:22		Middle	2.5	28.90	28.90		8.44	8.44		26.89	26.89		91.1	90.3		6.09	6.03		2.69	2.71		5	
4/7/2015	15:56	Fine	Middle	2.5	27.90	27.90	27.95	8.26	8.26	8.26	28.67	28.67	28.68	68.0	72.0	69.9	4.54	4.81	4.67	3.06	3.05	3.07	2	2.00
	15:58		Middle	2.5	28.00	28.00		8.25	8.25		28.69	28.69		70.1	69.4		4.68	4.64		3.03	3.12		2	
6/7/2015	15:47	Fine	Middle	3.5	26.80	26.80	26.85	8.28	8.28	8.28	30.03	30.03	30.04	79.7	79.8	79.6	5.38	5.39	5.37	2.49	2.48	2.45	2	2.00
	15:49		Middle	3.5	26.90	26.90		8.28	8.28		30.04	30.04		79.1	79.7		5.34	5.38		2.46	2.37		2	
8/7/2015	16:52	Fine	Middle	2.5	26.40	26.40	26.45	8.30	8.30	8.30	32.32	32.32	32.32	70.0	69.1	68.8	4.70	4.94	4.69	3.13	3.44	3.32	5	4.50
	16:54		Middle	2.5	26.50	26.50		8.30	8.30		32.32	32.32		68.4	67.5		4.59	4.53		3.39	3.32		4	
10/7/2015	17:43	Cloudy	Middle	2.5	26.40	26.40	26.40	8.25	8.25	8.26	32.67	32.67	32.67	67.2	65.7	66.2	4.50	4.41	4.44	3.14	3.20	3.20	4	4.00
	17:45		Middle	2.5	26.40	26.40		8.26	8.26		32.67	32.67		65.6	66.2		4.41	4.44		3.23	3.24		4	
13/7/2015	10:13	Fine	Middle	2.5	27.40	27.40	27.45	8.23	8.23	8.24	31.84	31.84	31.84	69.7	71.2	70.4	4.61	4.70	4.65	3.20	3.00	3.04	<2	<2
	10:15		Middle	2.5	27.50	27.50		8.24	8.24		31.83	31.83		70.4	70.1		4.66	4.64		2.98	2.98		<2	
15/7/2015	11:16	Fine	Middle	2.5	27.80	27.80	27.85	8.26	8.26	8.26	31.20	31.20	31.20	61.4	59.4	59.1	4.05	3.92	3.90	3.37	3.37	3.31	3	3.00
	11:18		Middle	2.5	27.90	27.90		8.26	8.26		31.19	31.19		58.2	57.4		3.84	3.79		3.34	3.14		3	
17/7/2015	14:52	Fine	Middle	2.5	27.70	27.70	27.65	8.27	8.27	8.27	30.11	30.11	30.40	73.4	73.8	73.4	4.88	4.91	4.88	3.80	3.86	3.91	3	3.00
	14:54		Middle	2.5	27.60	27.60		8.27	8.27		30.68	30.68		73.6	72.6		4.90	4.82		3.96	4.00		3	
20/7/2015	14:35	Cloudy	Middle	3.0	27.10	27.10	27.10	8.23	8.23	8.24	31.88	31.88	31.89	71.7	71.6	71.8	4.77	4.77	4.78	6.49	6.52	6.52	5	5.00
	14:37		Middle	3.0	27.10	27.10		8.24	8.24		31.89	31.89		72.2	71.7		4.81	4.78		6.52	6.53		5	
22/7/2015	-	Amber Rainstorm	Middle	-	-	-	-	-	-	-	-	-	-	-	-	-	-	-	-	-	-	-	-	
	-		Middle	-	-	-	-	-	-	-	-	-	-	-	-	-	-	-	-	-	-	-	-	
25/7/2015	8:12	Cloudy	Middle	2.5	27.80	27.80	27.70	8.15	8.15	8.15	25.03	25.03	25.04	73.9	74.3	74.0	5.07	5.09	5.07	3.37	3.35	3.33	3	3.00
	8:14		Middle	2.5	27.60	27.60		8.15	8.15		25.05	25.05		74.3	73.6		5.09	5.01		3.31	3.29		3	

Remarks:
Single underline denotes exceedance over Action Level.
Double underline denotes exceedance over Limit Level.



**Water Monitoring Result at RW21-P789 - Sun Hung Kai Centre
Mid-Ebb Tide**

Date	Time	Weather Condition	Sampling Depth		Water Temperature			pH			Salinity		DO Saturation		DO		Turbidity		Suspended Solids					
					°C			-			ppt		%		mg/L		NTU		mg/L					
					Value	Average		Value	Average		Value	Average	Value	Average	Value	Average	Value	Average	Value	Average				
29/6/2015	9:45	Fine	Middle	3.0	29.30	29.30	29.45	8.35	8.35	8.37	24.22	24.22	24.24	88.7	86.7	88.3	5.92	5.78	5.90	3.80	3.75	3.72	8	8.00
	9:47		Middle	3.0	29.60	29.60		8.39	8.39		24.26	24.26		89.2	88.7		5.96	5.92		3.64	3.68		8	
2/7/2015	10:04	Fine	Middle	3.0	27.80	27.80	27.95	8.27	8.27	8.28	28.57	28.57	28.57	78.3	78.5	77.7	5.23	5.24	5.19	4.40	4.40	4.40	4	4.00
	10:06		Middle	3.0	28.10	28.10		8.28	8.28		28.56	28.56		76.5	77.4		5.10	5.17		4.41	4.40		4	
4/7/2015	13:49	Fine	Middle	3.0	28.70	28.70	29.10	8.26	8.26	8.23	29.50	29.50	29.46	83.8	77.7	79.7	5.46	5.06	5.19	2.30	2.33	2.34	2	2.00
	13:50		Middle	3.0	29.50	29.50		8.19	8.19		29.42	29.42		79.1	78.1		5.15	5.08		2.35	2.36		2	
6/7/2015	14:05	Fine	Middle	4.0	27.40	27.40	27.45	8.25	8.25	8.25	31.26	31.26	31.26	75.8	78.1	76.8	5.04	5.18	5.10	2.89	2.87	2.88	2	2.00
	14:07		Middle	4.0	27.50	27.50		8.25	8.25		31.26	31.26		76.2	77.2		5.06	5.12		2.87	2.87		2	
8/7/2015	17:15	Fine	Middle	3.5	26.30	26.30	26.35	8.29	8.29	8.30	32.49	32.49	32.48	66.4	67.3	67.6	4.46	4.55	4.54	2.64	2.63	2.61	4	4.00
	17:17		Middle	3.5	26.40	26.40		8.30	8.30		32.46	32.46		68.2	68.1		4.58	4.57		2.58	2.57		4	
10/7/2015	18:40	Cloudy	Middle	3.0	26.38	26.38	26.43	7.63	7.63	7.62	32.60	32.61	32.61	96.7	96.5	96.3	6.42	6.41	6.39	2.43	2.38	2.33	4	4.00
	18:41		Middle	3.0	26.47	26.47		7.61	7.61		32.61	32.60		96.0	95.8		6.37	6.36		2.29	2.22		4	
13/7/2015	10:38	Fine	Middle	3.5	27.10	27.10	27.15	8.21	8.21	8.16	32.16	32.16	32.13	62.5	62.5	62.1	4.15	4.15	4.12	3.71	3.81	3.74	2	2.00
	10:40		Middle	3.5	27.20	27.20		8.11	8.11		32.10	32.10		62.0	61.2		4.12	4.06		3.79	3.65		2	
15/7/2015	11:42	Fine	Middle	3.5	27.60	27.60	27.70	8.24	8.24	8.24	31.70	31.70	31.68	67.8	68.5	67.8	4.47	4.52	4.47	3.46	3.49	3.38	4	3.00
	11:44		Middle	3.5	27.80	27.80		8.24	8.24		31.66	31.66		67.6	67.2		4.46	4.43		3.29	3.26		2	
17/7/2015	10:37	Fine	Middle	3.5	27.30	27.30	27.35	8.21	8.21	8.22	31.83	31.83	31.83	72.9	71.4	73.6	4.83	4.78	4.89	4.13	4.07	4.07	5	4.00
	10:39		Middle	3.5	27.40	27.40		8.23	8.23		31.83	31.83		74.9	75.2		4.96	4.98		4.05	4.04		3	
20/7/2015	14:55	Cloudy	Middle	3.0	26.80	26.80	26.80	8.27	8.27	8.27	31.72	31.72	31.72	72.2	72.8	72.3	4.84	4.87	4.84	3.50	3.47	3.48	4	4.00
	14:57		Middle	3.0	26.80	26.80		8.27	8.27		31.72	31.72		72.1	72.1		4.83	4.83		3.47	3.49		4	
22/7/2015	-	Amber Rainstorm	Middle	-	-	-		-	-		-	-		-	-		-	-		-	-		-	
	-		Middle	-	-	-		-	-		-	-		-	-		-	-		-	-		-	
25/7/2015	8:48	Cloudy	Middle	3.5	27.10	27.10	27.10	8.14	8.14	8.14	25.10	25.10	25.11	76.1	75.4	74.7	5.25	5.20	5.15	2.74	2.74	2.74	3	3.00
	8:50		Middle	3.5	27.10	27.10		8.14	8.14		25.11	25.11		74.3	73.0		5.13	5.03		2.74	2.74		3	

Remarks:
Single underline denotes exceedance over Action Level.
Double underline denotes exceedance over Limit Level.



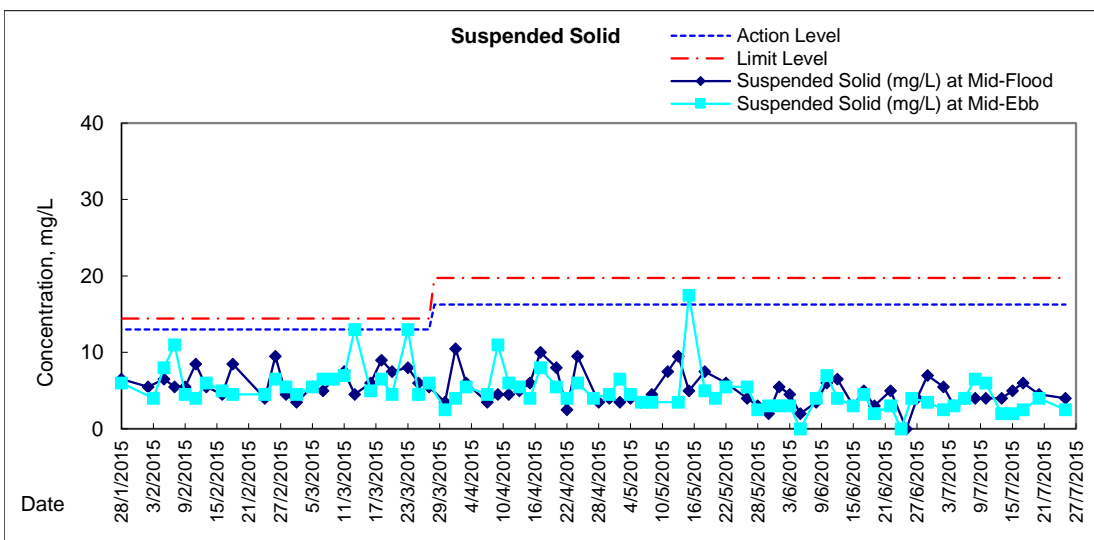
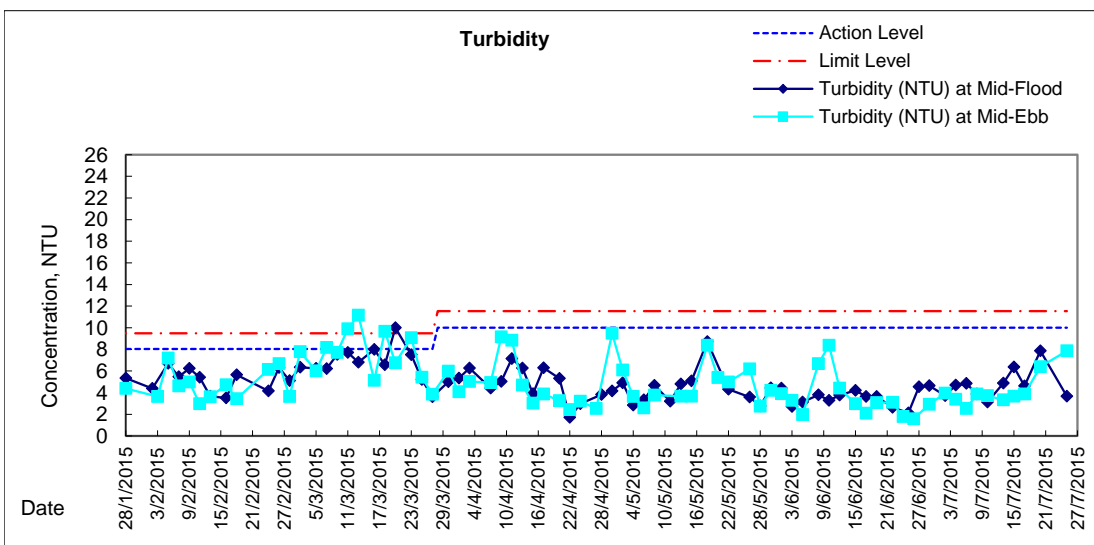
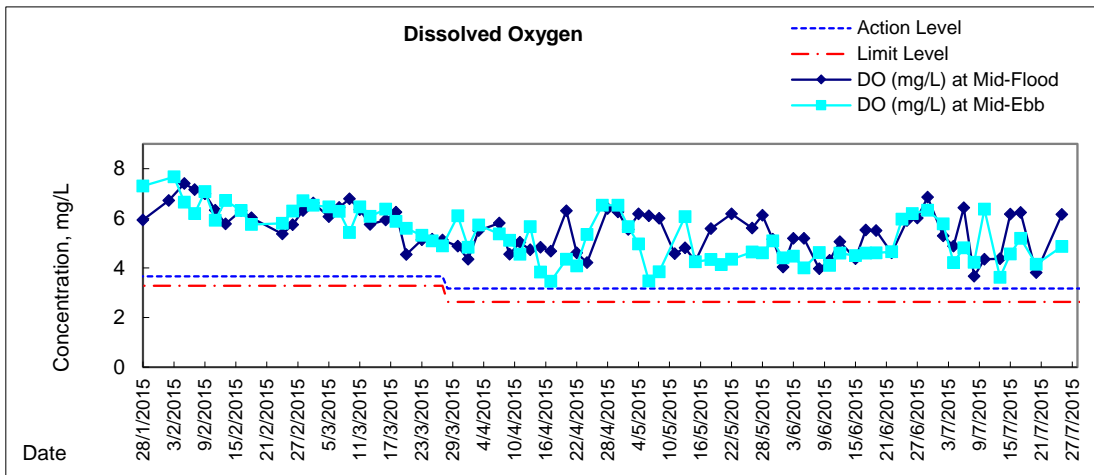
**Water Monitoring Result at WSD19 - Sheung Wan
Mid-Ebb Tide**

Date	Time	Weather Condition	Sampling Depth		Water Temperature			pH			Salinity		DO Saturation		DO		Turbidity		Suspended Solids					
					°C			-			ppt		%		mg/L		NTU		mg/L					
					Value	Average		Value	Average		Value	Average	Value	Average	Value	Average	Value	Average	Value	Average				
29/6/2015	10:50	Fine	Middle	3.0	29.30	29.30	29.40	8.43	8.43	8.46	21.67	21.67	21.67	93.9	92.0	93.2	6.36	6.23	6.32	3.00	2.90	2.92	3	3.50
	10:52		Middle	3.0	29.50	29.50		8.49	8.49		21.67	21.67		92.7	94.3		6.27	6.43		2.89	2.88		4	
2/7/2015	11:06	Fine	Middle	3.5	29.00	29.00	29.15	8.34	8.34	8.37	26.00	26.00	26.00	87.0	87.5	86.9	5.78	5.81	5.77	3.94	3.94	3.96	2	2.50
	11:08		Middle	3.5	29.30	29.30		8.40	8.40		26.00	26.00		87.1	86.1		5.78	5.72		3.96	3.99		3	
4/7/2015	14:39	Fine	Middle	3.5	28.70	28.70	28.70	8.09	8.09	8.12	28.85	28.85	28.66	63.9	64.1	63.7	4.23	4.24	4.21	3.30	3.33	3.38	3	3.00
	14:41		Middle	3.5	28.70	28.70		8.14	8.14		28.46	28.46		63.6	63.2		4.21	4.17		3.43	3.44		3	
6/7/2015	13:25	Fine	Middle	3.5	27.20	27.20	27.55	8.27	8.27	8.22	30.67	30.67	30.69	74.3	71.7	72.5	4.94	4.75	4.80	2.54	2.52	2.53	4	4.00
	13:27		Middle	3.5	27.90	27.90		8.17	8.17		30.71	30.71		73.1	70.7		4.84	4.68		2.52	2.52		4	
8/7/2015	16:05	Fine	Middle	3.5	27.50	27.50	27.50	8.24	8.24	8.24	31.97	31.97	32.00	64.1	63.5	64.0	4.23	4.19	4.23	3.62	3.85	3.89	6	6.50
	16:07		Middle	3.5	27.50	27.50		8.23	8.23		32.02	32.02		63.9	64.6		4.22	4.26		4.20	3.87		7	
10/7/2015	19:37	Cloudy	Middle	3.5	26.11	26.11	26.14	7.55	7.55	7.56	31.80	31.82	31.80	94.6	94.5	94.3	6.39	6.38	6.37	3.88	3.68	3.72	6	6.00
	19:38		Middle	3.5	26.17	26.17		7.56	7.56		31.80	31.79		94.2	94.0		6.37	6.35		3.63	3.70		6	
13/7/2015	9:27	Fine	Middle	3.5	27.70	27.70	27.85	8.24	8.24	8.23	31.91	31.91	31.94	53.6	55.7	54.9	3.53	3.67	3.62	3.50	3.49	3.34	2	2.00
	9:29		Middle	3.5	28.00	28.00		8.21	8.21		31.96	31.96		56.2	54.2		3.69	3.57		3.20	3.17		2	
15/7/2015	10:27	Fine	Middle	3.5	28.40	28.40	28.55	8.26	8.26	8.26	30.97	30.97	30.96	69.3	70.7	69.9	4.53	4.62	4.57	3.64	3.64	3.67	2	2.00
	10:29		Middle	3.5	28.70	28.70		8.26	8.26		30.94	30.94		69.7	69.8		4.56	4.55		3.68	3.70		2	
17/7/2015	11:50	Fine	Middle	3.5	27.30	27.30	27.35	8.26	8.26	8.26	30.47	30.47	30.48	78.4	77.3	77.8	5.23	5.16	5.19	4.06	4.00	3.88	2	2.50
	11:52		Middle	3.5	27.40	27.40		8.25	8.25		30.48	30.48		77.3	78.2		5.16	5.22		3.74	3.71		3	
20/7/2015	13:25	Cloudy	Middle	3.5	26.50	26.50	26.50	8.15	8.15	8.17	31.68	31.68	31.68	63.5	61.7	61.7	4.27	4.15	4.15	6.17	6.29	6.39	4	4.00
	13:27		Middle	3.5	26.50	26.50		8.18	8.18		31.68	31.68		60.3	61.1		4.05	4.11		6.42	6.68		4	
22/7/2015	-	Amber Rainstorm	Middle	-	-	-		-	-		-	-		-	-		-	-		-	-		-	
	-		Middle	-	-	-		-	-		-	-		-	-		-	-		-	-		-	
25/7/2015	6:45	Cloudy	Middle	3.5	27.40	27.40	27.45	7.59	7.59	7.68	24.77	24.77	24.76	71.2	71.3	70.7	4.90	4.90	4.86	7.98	8.00	7.87	2	2.50
	6:47		Middle	3.5	27.50	27.50		7.76	7.76		24.74	24.74		70.4	70.0		4.84	4.81		7.90	7.61		3	

Remarks:
Single underline denotes exceedance over Action Level.
Double underline denotes exceedance over Limit Level.

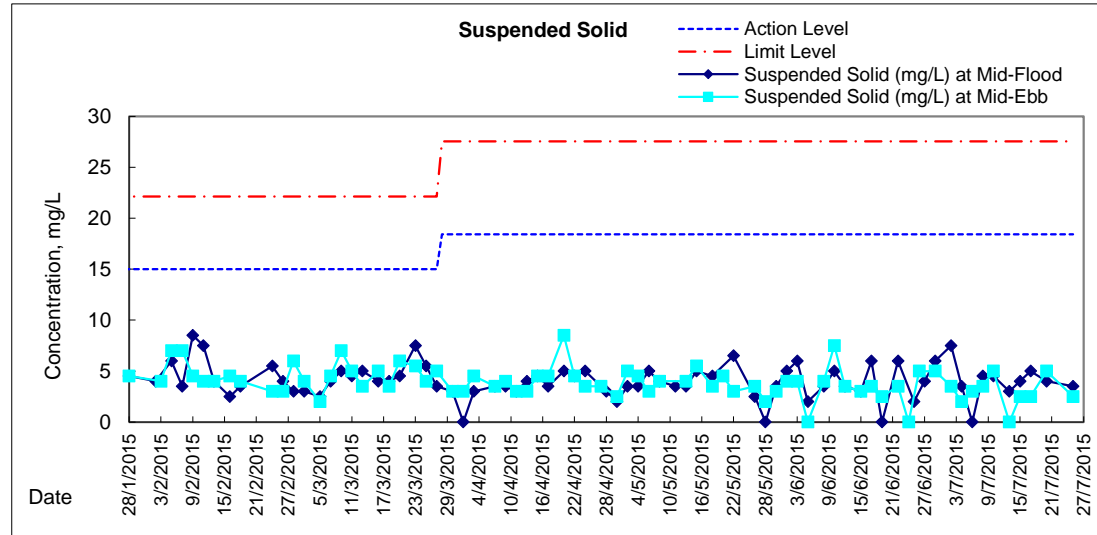
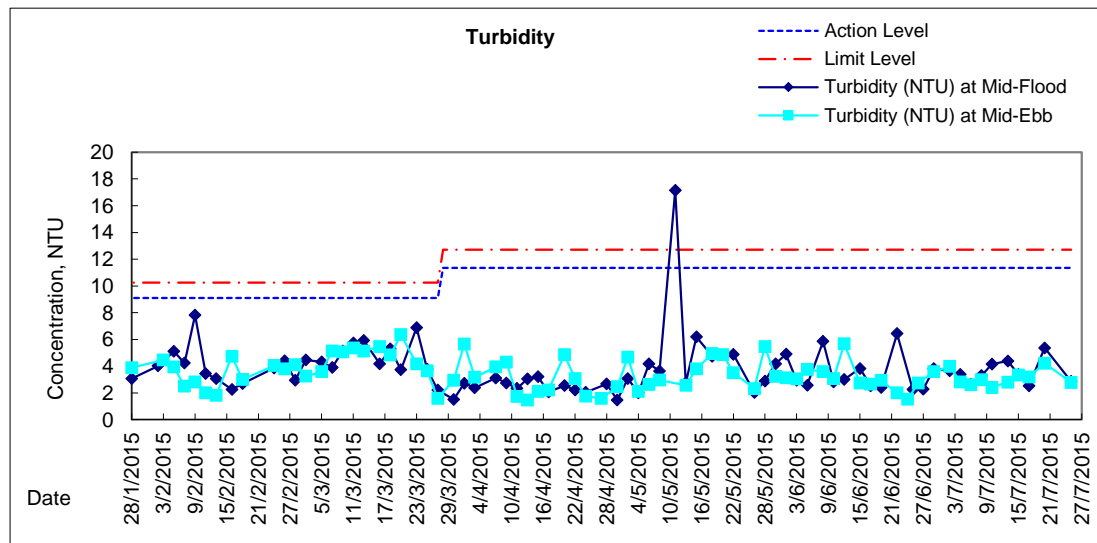
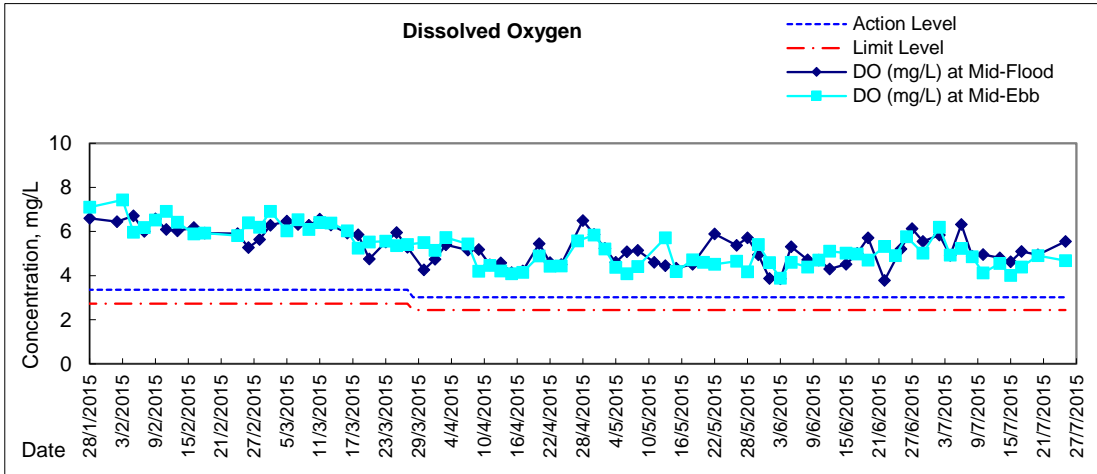


Graphic Presentation of Water Quality Result of WSD19 - Sheung Wan



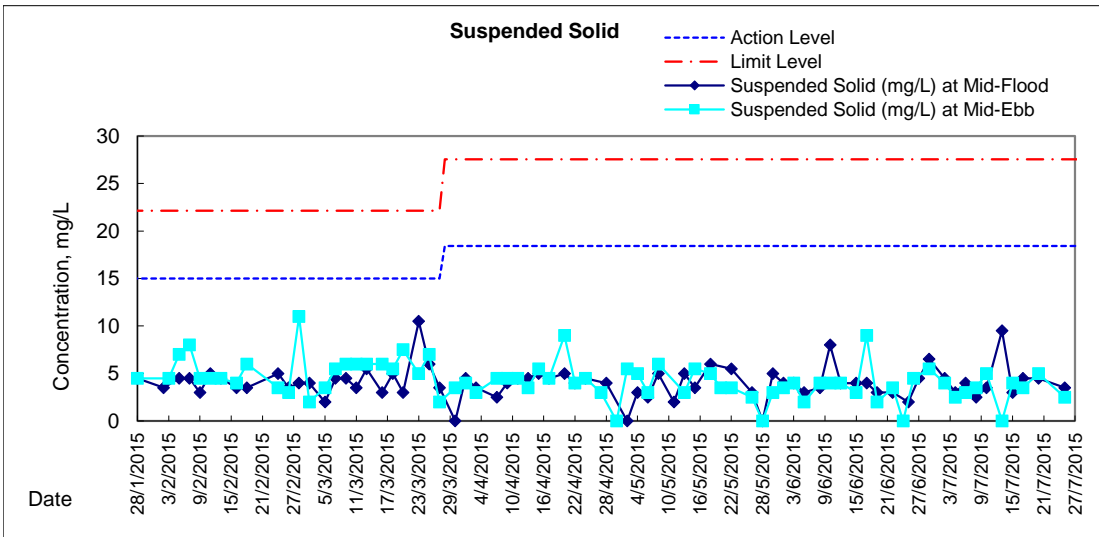
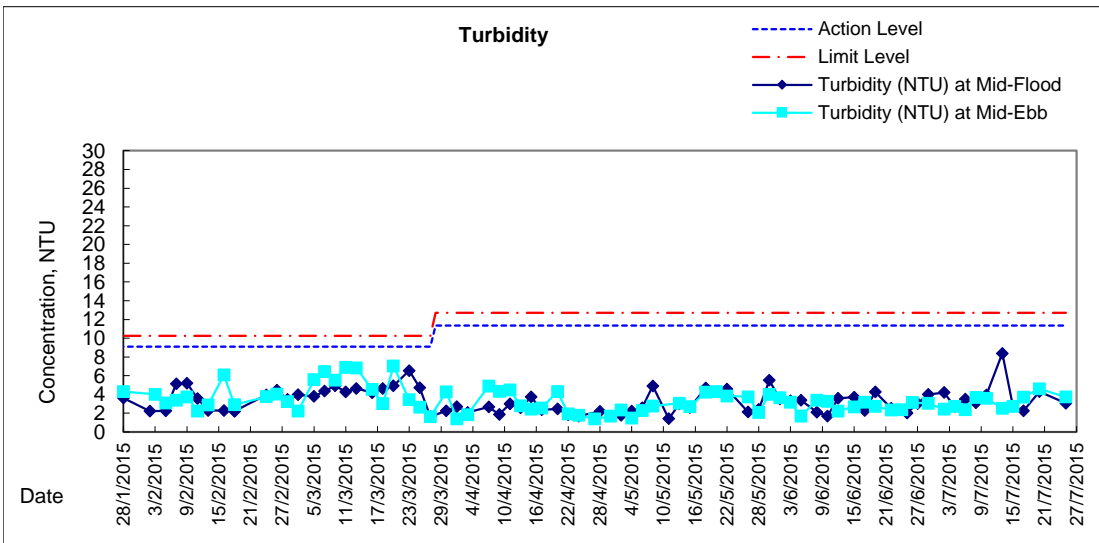
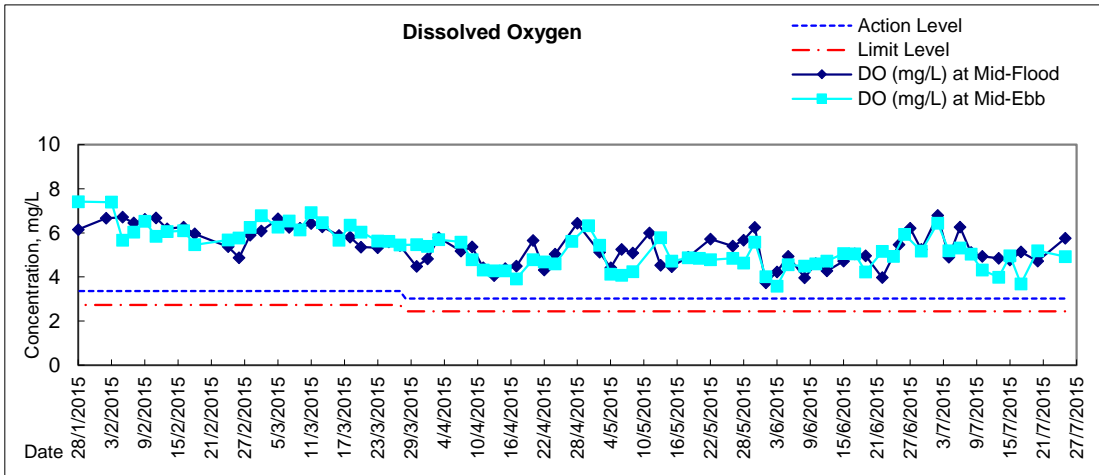


Graphic Presentation of Water Quality Result of C1 - HKCEC



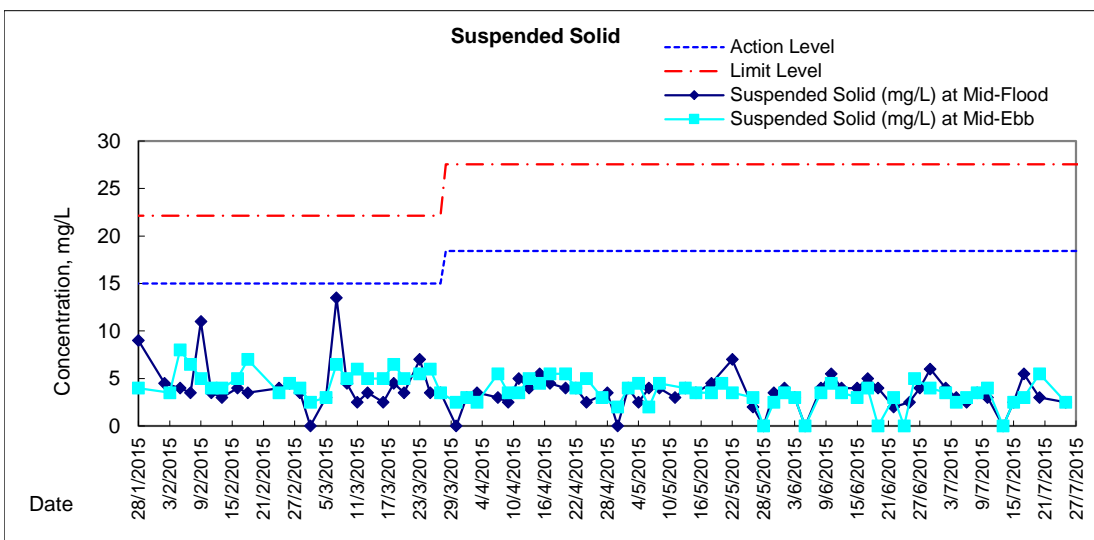
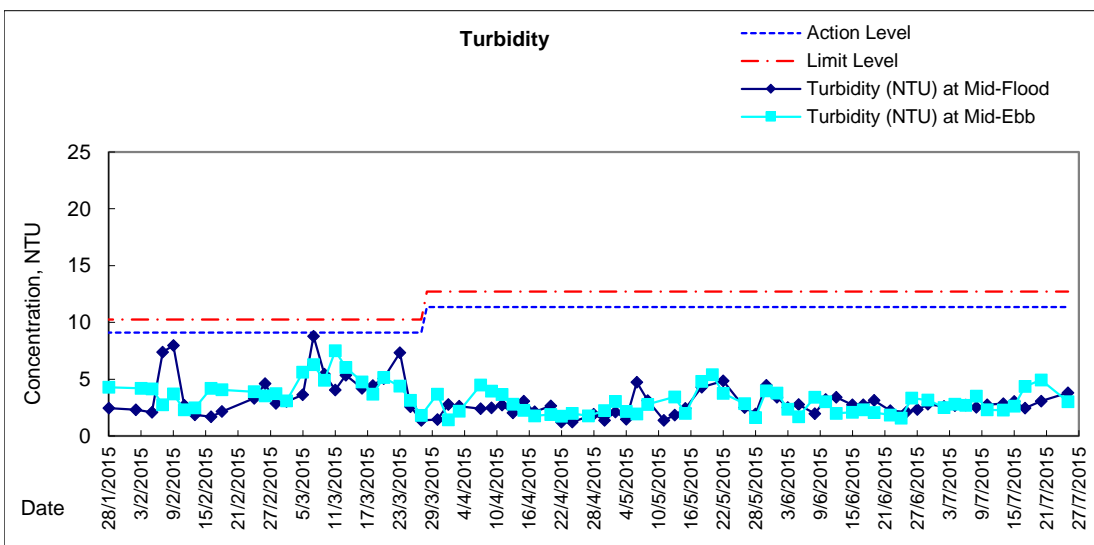
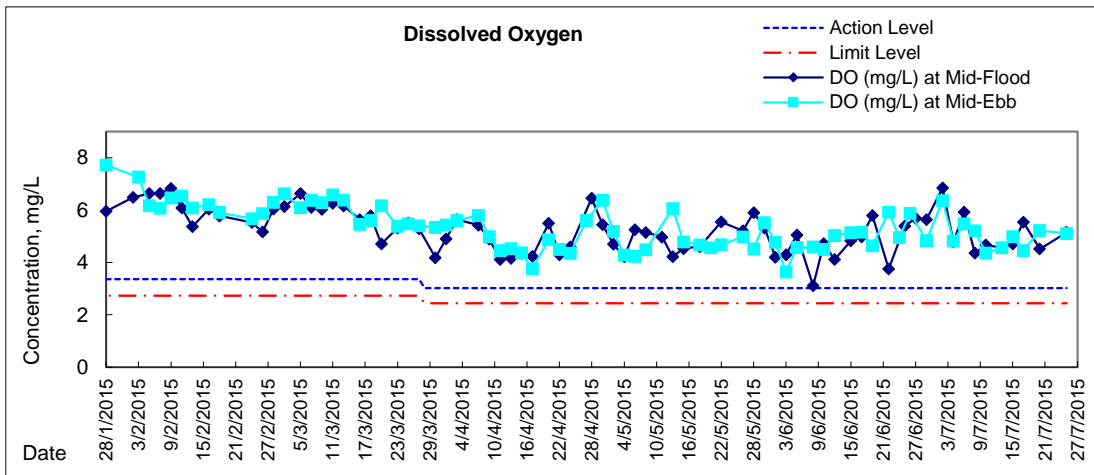


Graphic Presentation of Water Quality Result of P1 - HKCEC Phase I



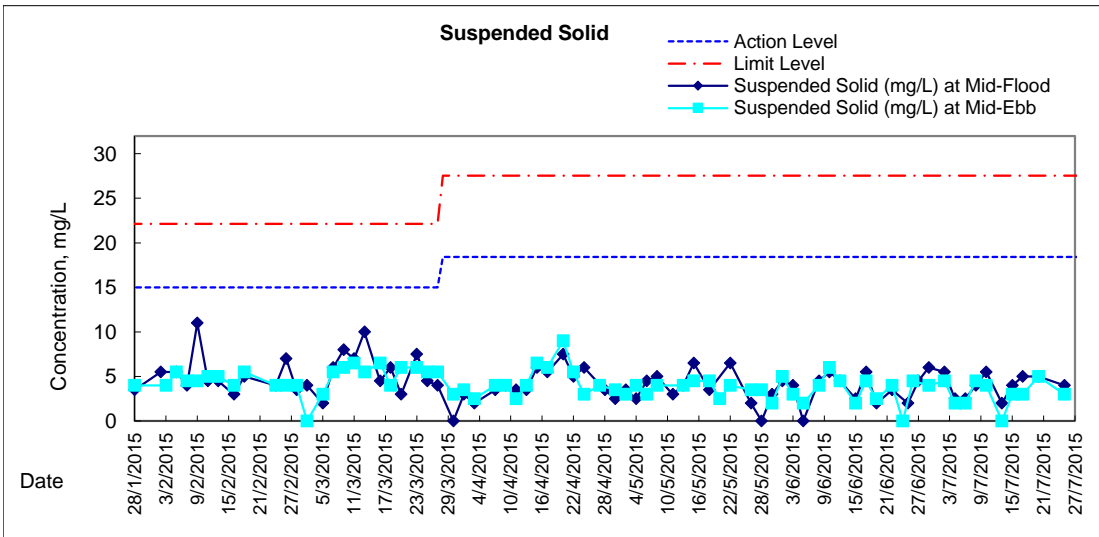
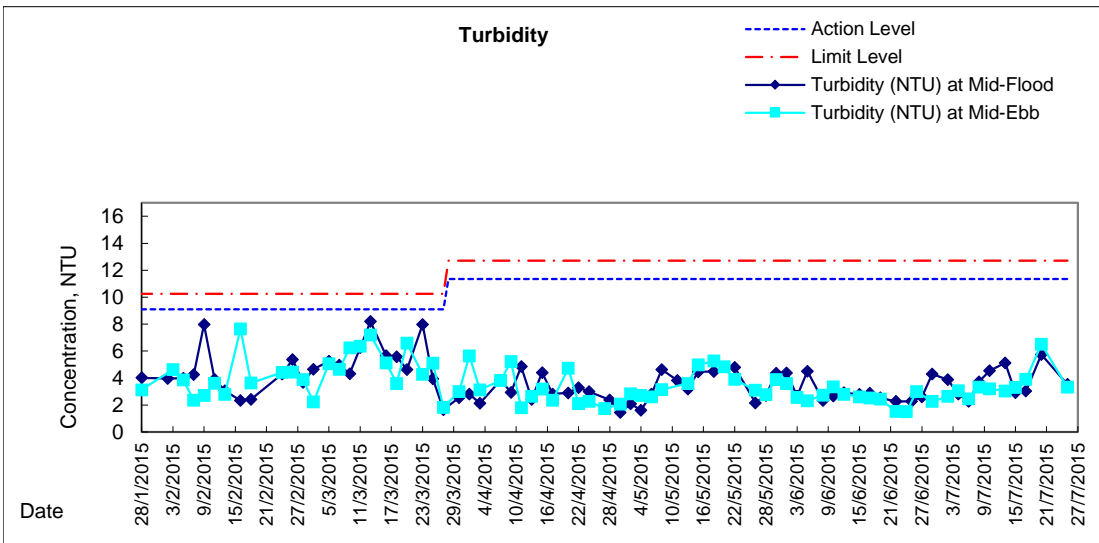
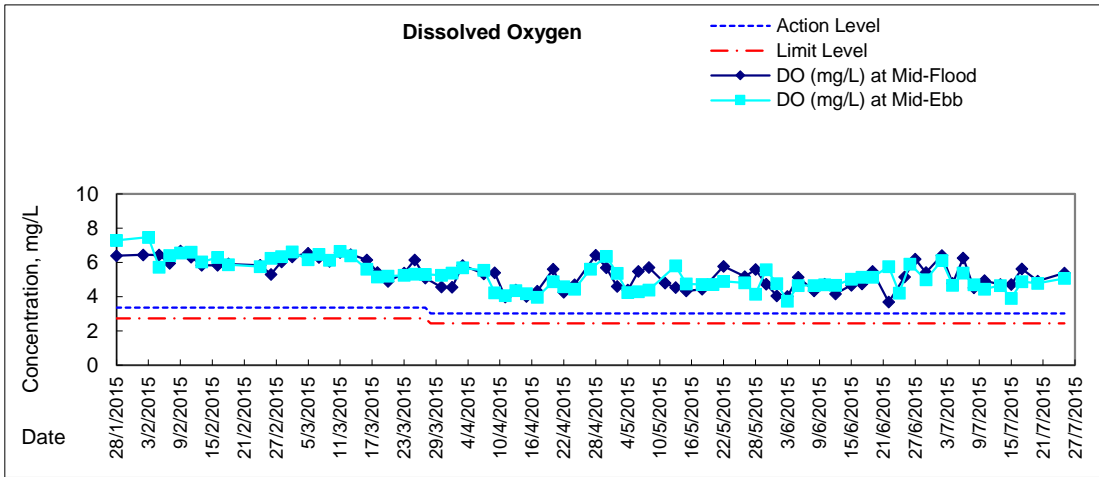


Graphic Presentation of Water Quality Result of P3 - APA



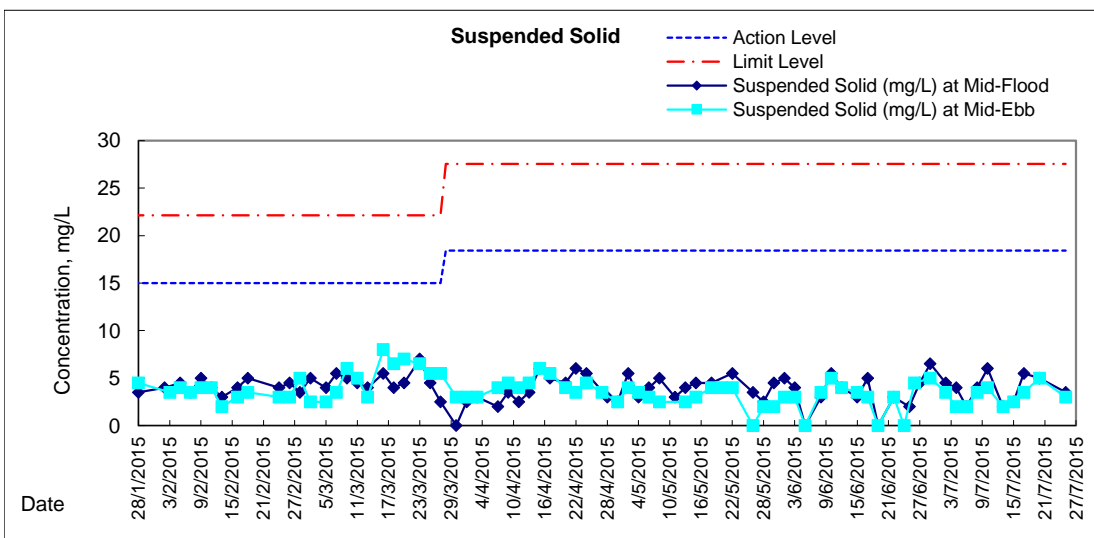
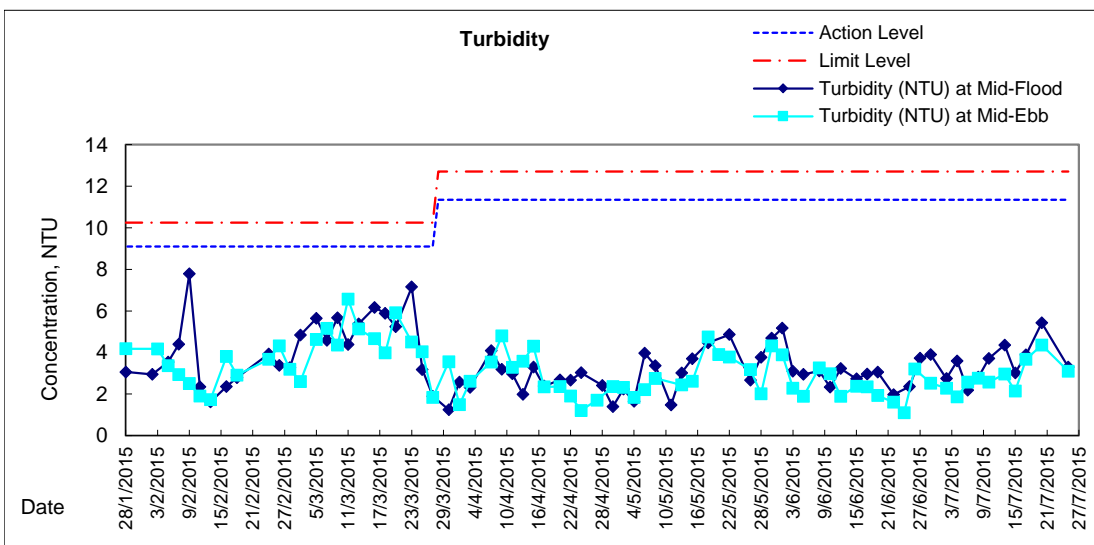
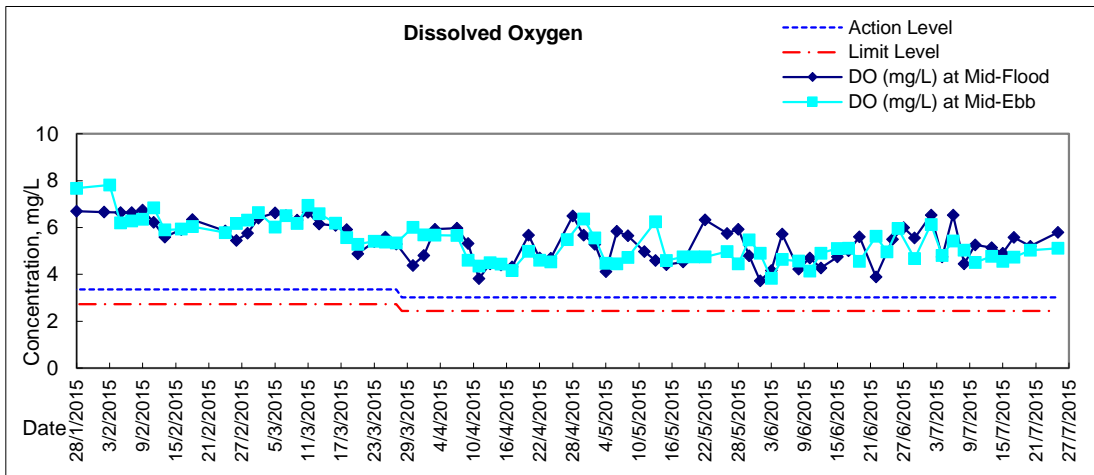


Graphic Presentation of Water Quality Result of P5 - WCT / RT / IT



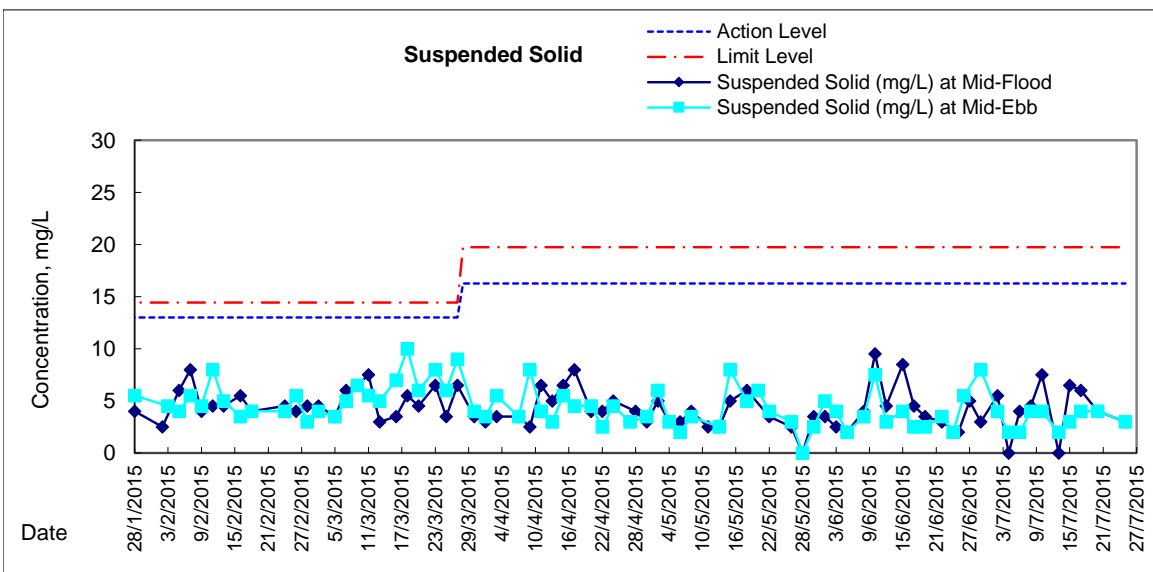
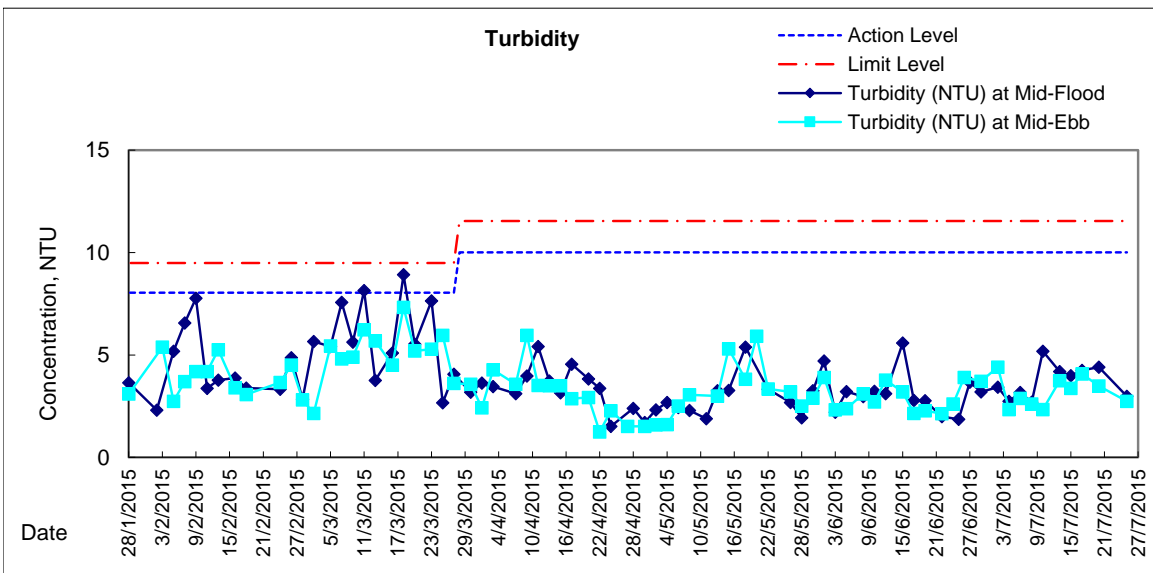
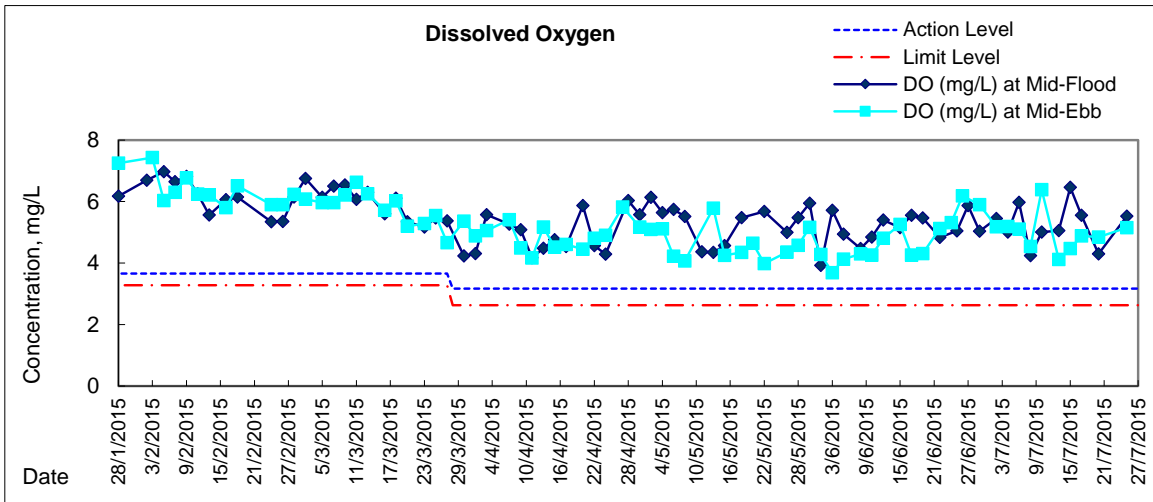


Graphic Presentation of Water Quality Result of P4 - SOC



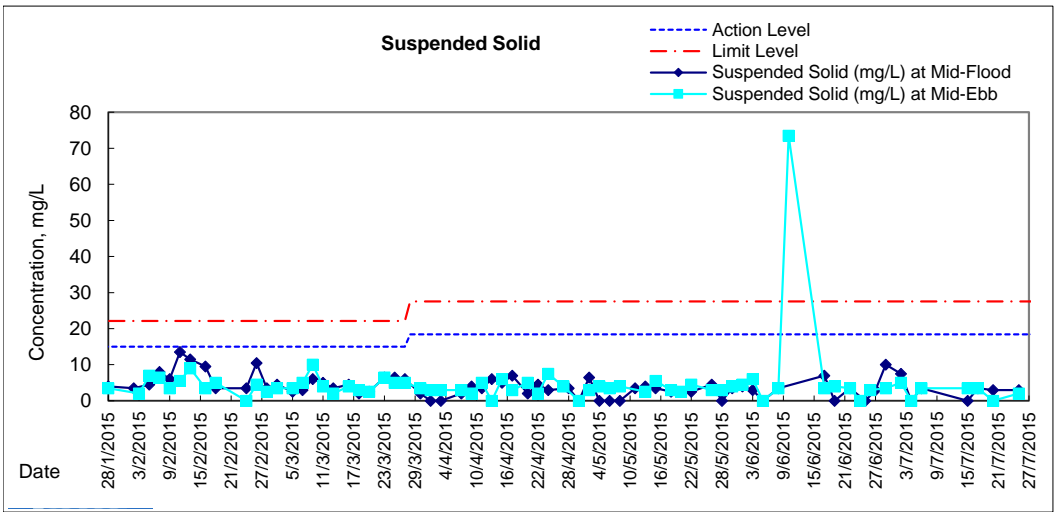
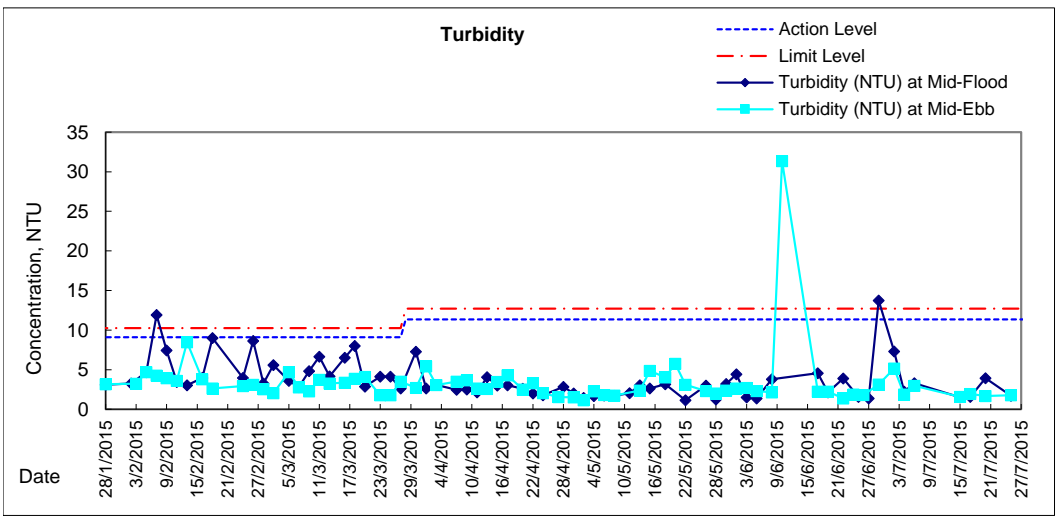
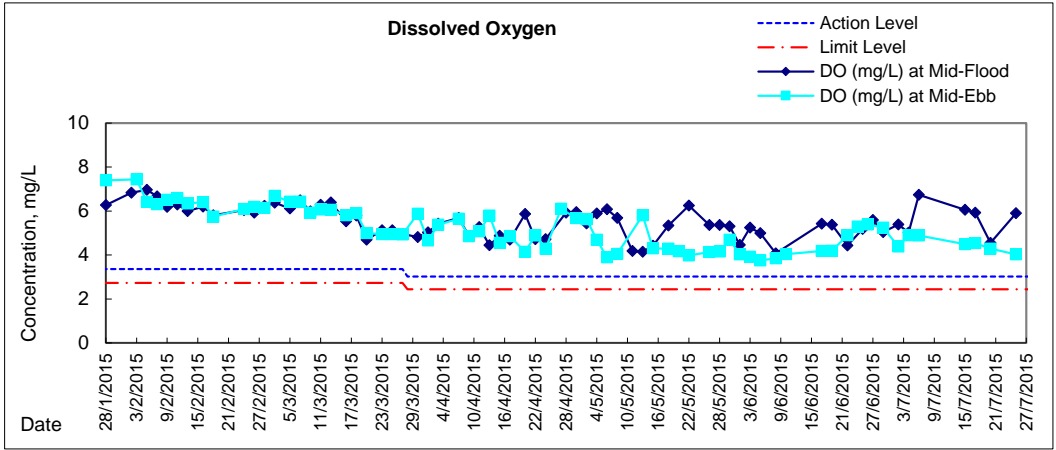


Graphic Presentation of Water Quality Result of RW21-P789 - GEC/CRC/SHK





Graphic Presentation of Water Quality Result of C7 - Windsor House





**Water Monitoring Result at C6 - Excelsior Hotel
Mid-Flood Tide**

Date	Time	Weater Condition	Sampling Depth		Water Temperature			pH			Salinity		DO Saturation			DO			
					°C			-			ppt		%			mg/L			
					Value	Average		Value	Average		Value	Average	Value	Average	Value	Average			
29/6/2015	-	Fine	Surface	-	-	-	-	-	-	-	-	-	-	-	-	-	-	-	
	17:36		Middle	1.5	28.90	28.90	28.9	8.35	8.35	8.4	22.34	22.34	22.3	79.9	82.1	81.0	5.44	5.58	5.51
	-		Bottom	-	-	-	-	-	-	-	-	-	-	-	-	-	-	-	-
2/7/2015	-	Fine	Surface	-	-	-	-	-	-	-	-	-	-	-	-	-	-	-	
	20:52		Middle	1.0	28.10	28.10	28.1	7.84	7.84	7.8	24.27	24.27	24.3	76.8	77.1	77.0	5.22	5.24	5.23
	-		Bottom	-	-	-	-	-	-	-	-	-	-	-	-	-	-	-	-
4/7/2015	-	Fine	Surface	-	-	-	-	-	-	-	-	-	-	-	-	-	-	-	
	22:10		Middle	1.5	27.40	27.40	27.4	8.14	8.14	8.1	28.31	28.31	28.3	65.9	67.8	66.9	4.45	4.58	4.52
	-		Bottom	-	-	-	-	-	-	-	-	-	-	-	-	-	-	-	-
6/7/2015	-	Cloudy	Surface	-	-	-	-	-	-	-	-	-	-	-	-	-	-	-	
	22:01		Middle	1.5	26.78	26.78	26.8	7.50	7.50	7.5	28.39	28.40	28.4	91.5	91.3	91.4	6.24	6.22	6.23
	-		Bottom	-	-	-	-	-	-	-	-	-	-	-	-	-	-	-	-
8/7/2015	-	Fine	Surface	-	-	-	-	-	-	-	-	-	-	-	-	-	-	-	
	11:28		Middle	1.5	25.90	25.90	25.9	8.21	8.21	8.2	30.94	30.94	30.9	66.0	66.3	66.2	4.50	4.52	4.51
	-		Bottom	-	-	-	-	-	-	-	-	-	-	-	-	-	-	-	-
10/7/2015	-	Fine	Surface	-	-	-	-	-	-	-	-	-	-	-	-	-	-	-	
	14:45		Middle	1.5	26.60	26.60	26.6	8.17	8.17	8.2	31.97	31.97	32.0	78.0	77.1	77.6	5.21	5.14	5.18
	-		Bottom	-	-	-	-	-	-	-	-	-	-	-	-	-	-	-	-
13/7/2015	-	Fine	Surface	-	-	-	-	-	-	-	-	-	-	-	-	-	-	-	
	15:40		Middle	1.5	28.90	28.90	28.9	8.18	8.18	8.2	31.06	31.06	31.1	65.3	65.8	65.6	4.22	4.25	4.24
	-		Bottom	-	-	-	-	-	-	-	-	-	-	-	-	-	-	-	-
15/7/2015	-	Cloudy	Surface	-	-	-	-	-	-	-	-	-	-	-	-	-	-	-	
	18:40		Middle	1.0	27.89	27.88	27.9	7.62	7.62	7.6	29.49	29.49	29.5	83.8	82.5	83.2	5.58	5.49	5.54
	-		Bottom	-	-	-	-	-	-	-	-	-	-	-	-	-	-	-	-
17/7/2015	-	Cloudy	Surface	-	-	-	-	-	-	-	-	-	-	-	-	-	-	-	
	18:45		Middle	1.0	28.07	27.98	28.0	7.54	7.54	7.5	28.65	28.66	28.7	89.0	88.5	88.8	5.95	5.92	5.94
	-		Bottom	-	-	-	-	-	-	-	-	-	-	-	-	-	-	-	-
20/7/2015	-	Cloudy	Surface	-	-	-	-	-	-	-	-	-	-	-	-	-	-	-	
	10:15		Middle	1.5	26.40	26.40	26.4	8.00	8.00	8.0	31.14	31.14	31.1	71.0	70.8	70.9	4.80	4.79	4.80
	-		Bottom	-	-	-	-	-	-	-	-	-	-	-	-	-	-	-	-
22/7/2015	-	Amber Rainstorm	Surface	-	-	-	-	-	-	-	-	-	-	-	-	-	-	-	
	-		Middle	-	-	-	-	-	-	-	-	-	-	-	-	-	-	-	
	-		Bottom	-	-	-	-	-	-	-	-	-	-	-	-	-	-	-	
25/7/2015	-	Cloudy	Surface	-	-	-	-	-	-	-	-	-	-	-	-	-	-	-	
	0:03		Middle	1.0	27.72	27.71	27.7	7.92	7.92	7.9	23.83	23.75	23.8	87.5	86.5	87.0	5.99	5.96	5.98
	-		Bottom	-	-	-	-	-	-	-	-	-	-	-	-	-	-	-	-

Remarks:
Single underline denotes exceedance over Action Level.
Double underline denotes exceedance over Limit Level.



**Water Monitoring Result at Ex-WPCWA SW - South-western corners of ex-Public Cargo Works Area
Mid-Flood Tide**

Date	Time	Weater Condition	Sampling Depth		Water Temperature			pH		Salinity		DO Saturation		DO					
			m	°C			-		ppt		%		mg/L						
				Value	Average	Value	Average	Value	Average	Value	Average	Value	Average						
29/6/2015	-	Fine	Surface	-	-	-	-	-	-	-	-	-	-	-	-	-	-	-	
	17:25		Middle	1.5	28.40	28.40	28.4	8.43	8.43	8.4	21.60	21.60	21.6	77.5	77.1	77.3	5.33	5.31	5.32
	-		Bottom	-	-	-	-	-	-	-	-	-	-	-	-	-	-	-	-
2/7/2015	-	Fine	Surface	-	-	-	-	-	-	-	-	-	-	-	-	-	-	-	-
	20:29		Middle	1.0	27.90	27.90	27.9	8.21	8.21	8.2	13.77	13.77	13.8	61.0	62.3	61.7	4.45	4.51	4.48
	-		Bottom	-	-	-	-	-	-	-	-	-	-	-	-	-	-	-	-
4/7/2015	-	Fine	Surface	-	-	-	-	-	-	-	-	-	-	-	-	-	-	-	-
	20:05		Middle	1.0	27.70	27.60	27.7	8.20	8.18	8.2	16.95	16.94	16.9	41.7	42.0	41.9	2.97	2.99	<u>2.98</u>
	-		Bottom	-	-	-	-	-	-	-	-	-	-	-	-	-	-	-	-
6/7/2015	-	Cloudy	Surface	-	-	-	-	-	-	-	-	-	-	-	-	-	-	-	-
	0:03		Middle	1.5	26.72	26.72	26.7	7.48	7.48	7.5	25.01	25.01	25.0	82.6	80.5	81.6	5.75	5.60	5.68
	-		Bottom	-	-	-	-	-	-	-	-	-	-	-	-	-	-	-	-
8/7/2015	-	Fine	Surface	-	-	-	-	-	-	-	-	-	-	-	-	-	-	-	-
	11:14		Middle	1.5	25.40	25.40	25.4	8.24	8.24	8.2	31.11	31.11	31.1	60.0	59.4	59.7	4.12	4.07	4.10
	-		Bottom	-	-	-	-	-	-	-	-	-	-	-	-	-	-	-	-
10/7/2015	-	Fine	Surface	-	-	-	-	-	-	-	-	-	-	-	-	-	-	-	-
	14:30		Middle	1.5	26.10	26.10	26.1	8.24	8.24	8.2	32.04	32.04	32.0	60.9	61.8	61.4	4.10	4.17	4.14
	-		Bottom	-	-	-	-	-	-	-	-	-	-	-	-	-	-	-	-
13/7/2015	-	Fine	Surface	-	-	-	-	-	-	-	-	-	-	-	-	-	-	-	-
	18:00		Middle	1.5	27.30	27.30	27.3	8.23	8.23	8.2	30.56	30.56	30.6	58.3	57.8	58.1	3.89	3.86	3.88
	-		Bottom	-	-	-	-	-	-	-	-	-	-	-	-	-	-	-	-
15/7/2015	-	Cloudy	Surface	-	-	-	-	-	-	-	-	-	-	-	-	-	-	-	-
	19:15		Middle	1.0	28.12	28.12	28.1	7.60	7.58	7.6	14.65	14.64	14.6	65.1	64.1	64.6	4.66	4.61	4.64
	-		Bottom	-	-	-	-	-	-	-	-	-	-	-	-	-	-	-	-
17/7/2015	-	Cloudy	Surface	-	-	-	-	-	-	-	-	-	-	-	-	-	-	-	-
	19:30		Middle	1.0	27.53	27.53	27.5	7.50	7.50	7.5	22.90	22.90	22.9	77.6	77.2	77.4	5.39	5.37	5.38
	-		Bottom	-	-	-	-	-	-	-	-	-	-	-	-	-	-	-	-
20/7/2015	-	Cloudy	Surface	-	-	-	-	-	-	-	-	-	-	-	-	-	-	-	-
	9:36		Middle	1.5	27.10	27.10	27.1	8.41	8.41	8.4	13.85	13.85	13.9	15.6	15.8	15.7	1.15	1.15	<u>1.15</u>
	-		Bottom	-	-	-	-	-	-	-	-	-	-	-	-	-	-	-	-
22/7/2015	-	Amber Rainstorm	Surface	-	-	-	-	-	-	-	-	-	-	-	-	-	-	-	-
	-		Middle	-	-	-	-	-	-	-	-	-	-	-	-	-	-	-	-
	-		Bottom	-	-	-	-	-	-	-	-	-	-	-	-	-	-	-	-
25/7/2015	-	Cloudy	Surface	-	-	-	-	-	-	-	-	-	-	-	-	-	-	-	-
	2:19		Middle	1.5	27.43	27.40	27.4	7.66	7.66	7.7	18.39	18.39	18.4	80.1	80.3	80.2	5.72	5.74	5.73
	-		Bottom	-	-	-	-	-	-	-	-	-	-	-	-	-	-	-	-

Remarks:
Single underline denotes exceedance over Action Level.
Double underline denotes exceedance over Limit Level.



**Water Monitoring Result at Ex-WPCWA SE - South-eastern corners of ex-Public Cargo Works Area
Mid-Flood Tide**

Date	Time	Weater Condition	Sampling Depth		Water Temperature		pH		Salinity		DO Saturation		DO		
					°C		-		ppt		%		mg/L		
			m	Value	Average	Value	Average	Value	Average	Value	Average	Value	Average		
29/6/2015	-	Fine	Surface	-	-	-	-	-	-	-	-	-	-	-	-
	-		Middle	-	-	-	-	-	-	-	-	-	-	-	-
	-		Bottom	-	-	-	-	-	-	-	-	-	-	-	-
2/7/2015	-	Fine	Surface	-	-	-	-	-	-	-	-	-	-	-	-
	-		Middle	-	-	-	-	-	-	-	-	-	-	-	-
	-		Bottom	-	-	-	-	-	-	-	-	-	-	-	-
4/7/2015	-	Fine	Surface	-	-	-	-	-	-	-	-	-	-	-	-
	-		Middle	-	-	-	-	-	-	-	-	-	-	-	-
	-		Bottom	-	-	-	-	-	-	-	-	-	-	-	-
6/7/2015	-	Cloudy	Surface	-	-	-	-	-	-	-	-	-	-	-	-
	-		Middle	-	-	-	-	-	-	-	-	-	-	-	-
	-		Bottom	-	-	-	-	-	-	-	-	-	-	-	-
8/7/2015	-	Fine	Surface	-	-	-	-	-	-	-	-	-	-	-	-
	-		Middle	-	-	-	-	-	-	-	-	-	-	-	-
	-		Bottom	-	-	-	-	-	-	-	-	-	-	-	-
10/7/2015	-	Fine	Surface	-	-	-	-	-	-	-	-	-	-	-	-
	-		Middle	-	-	-	-	-	-	-	-	-	-	-	-
	-		Bottom	-	-	-	-	-	-	-	-	-	-	-	-
13/7/2015	-	Fine	Surface	-	-	-	-	-	-	-	-	-	-	-	-
	-		Middle	-	-	-	-	-	-	-	-	-	-	-	-
	-		Bottom	-	-	-	-	-	-	-	-	-	-	-	-
15/7/2015	-	Cloudy	Surface	-	-	-	-	-	-	-	-	-	-	-	-
	-		Middle	-	-	-	-	-	-	-	-	-	-	-	-
	-		Bottom	-	-	-	-	-	-	-	-	-	-	-	-
17/7/2015	-	Cloudy	Surface	-	-	-	-	-	-	-	-	-	-	-	-
	-		Middle	-	-	-	-	-	-	-	-	-	-	-	-
	-		Bottom	-	-	-	-	-	-	-	-	-	-	-	-
20/7/2015	-	Cloudy	Surface	-	-	-	-	-	-	-	-	-	-	-	-
	-		Middle	-	-	-	-	-	-	-	-	-	-	-	-
	-		Bottom	-	-	-	-	-	-	-	-	-	-	-	-
22/7/2015	-	Amber Rainstorm	Surface	-	-	-	-	-	-	-	-	-	-	-	-
	-		Middle	-	-	-	-	-	-	-	-	-	-	-	-
	-		Bottom	-	-	-	-	-	-	-	-	-	-	-	-
25/7/2015	-	Cloudy	Surface	-	-	-	-	-	-	-	-	-	-	-	-
	-		Middle	-	-	-	-	-	-	-	-	-	-	-	-
	-		Bottom	-	-	-	-	-	-	-	-	-	-	-	-

Remarks:
 Single underline denotes exceedance over Action Level.
 Double underline denotes exceedance over Limit Level.



**Water Monitoring Result at C6 - Excelsior Hotel
Mid-Ebb Tide**

Date	Time	Weather Condition	Sampling Depth		Water Temperature			pH			Salinity			DO Saturation			DO		
					°C			-			ppt			%			mg/L		
					Value	Average		Value	Average		Value	Average		Value	Average		Value	Average	
29/6/2015	-	Fine	Surface	-	-	-	-	-	-	-	-	-	-	-	-	-	-	-	-
	10:10		Middle	2	28.70	28.70	28.7	8.31	8.31	8.3	23.63	23.63	23.6	76.6	76.9	76.8	5.18	5.20	5.19
	-		Bottom	-	-	-	-	-	-	-	-	-	-	-	-	-	-	-	-
2/7/2015	-	Fine	Surface	-	-	-	-	-	-	-	-	-	-	-	-	-	-	-	-
	10:25		Middle	2	28.20	28.20	28.2	8.22	8.22	8.2	25.79	25.79	25.8	74.8	74.7	74.8	5.04	5.08	5.06
	-		Bottom	-	-	-	-	-	-	-	-	-	-	-	-	-	-	-	-
4/7/2015	-	Fine	Surface	-	-	-	-	-	-	-	-	-	-	-	-	-	-	-	-
	14:09		Middle	2	28.00	28.00	28.0	7.94	7.94	7.9	27.21	27.21	27.2	57.5	55.1	56.3	3.86	3.69	3.78
	-		Bottom	-	-	-	-	-	-	-	-	-	-	-	-	-	-	-	-
6/7/2015	-	Fine	Surface	-	-	-	-	-	-	-	-	-	-	-	-	-	-	-	-
	14:40		Middle	2	26.90	26.90	26.9	8.13	8.13	8.1	30.31	30.31	30.3	71.8	72.0	71.9	4.83	4.83	4.83
	-		Bottom	-	-	-	-	-	-	-	-	-	-	-	-	-	-	-	-
8/7/2015	-	Fine	Surface	-	-	-	-	-	-	-	-	-	-	-	-	-	-	-	-
	17:35		Middle	2	26.10	26.10	26.1	8.22	8.22	8.2	31.34	31.34	31.3	63.7	65.9	64.8	4.32	4.47	4.40
	-		Bottom	-	-	-	-	-	-	-	-	-	-	-	-	-	-	-	-
10/7/2015	-	Cloudy	Surface	-	-	-	-	-	-	-	-	-	-	-	-	-	-	-	-
	18:15		Middle	2	26.78	26.78	26.8	7.62	7.62	7.6	31.51	31.51	31.5	94.5	95.0	94.8	6.27	6.32	6.30
	-		Bottom	-	-	-	-	-	-	-	-	-	-	-	-	-	-	-	-
13/7/2015	-	Fine	Surface	-	-	-	-	-	-	-	-	-	-	-	-	-	-	-	-
	11:00		Middle	2	27.40	27.40	27.4	8.15	8.15	8.2	31.26	31.26	31.3	52.1	51.8	52.0	3.46	3.44	3.45
	-		Bottom	-	-	-	-	-	-	-	-	-	-	-	-	-	-	-	-
15/7/2015	-	Fine	Surface	-	-	-	-	-	-	-	-	-	-	-	-	-	-	-	-
	12:05		Middle	2	28.20	28.20	28.2	8.12	8.12	8.1	28.91	28.91	28.9	58.8	58.6	58.7	3.89	3.84	3.87
	-		Bottom	-	-	-	-	-	-	-	-	-	-	-	-	-	-	-	-
17/7/2015	-	Fine	Surface	-	-	-	-	-	-	-	-	-	-	-	-	-	-	-	-
	10:55		Middle	2	27.20	27.20	27.2	8.19	8.19	8.2	30.91	30.91	30.9	74.7	73.7	74.2	4.99	4.92	4.96
	-		Bottom	-	-	-	-	-	-	-	-	-	-	-	-	-	-	-	-
20/7/2015	-	Cloudy	Surface	-	-	-	-	-	-	-	-	-	-	-	-	-	-	-	-
	15:45		Middle	2	26.70	26.70	26.7	8.16	8.16	8.2	28.42	28.42	28.4	61.1	59.4	60.3	4.18	4.08	4.13
	-		Bottom	-	-	-	-	-	-	-	-	-	-	-	-	-	-	-	-
22/7/2015	-	Amber Rainstorm	Surface	-	-	-	-	-	-	-	-	-	-	-	-	-	-	-	-
	-		Middle	-	-	-	-	-	-	-	-	-	-	-	-	-	-	-	-
	-		Bottom	-	-	-	-	-	-	-	-	-	-	-	-	-	-	-	-
25/7/2015	-	Cloudy	Surface	-	-	-	-	-	-	-	-	-	-	-	-	-	-	-	-
	9:10		Middle	2	27.10	27.10	27.1	8.02	8.02	8.0	24.13	24.13	24.1	63.6	61.6	62.6	4.42	4.29	4.36
	-		Bottom	-	-	-	-	-	-	-	-	-	-	-	-	-	-	-	-

Remarks:
Single underline denotes exceedance over Action Level.
Double underline denotes exceedance over Limit Level.



**Water Monitoring Result at Ex-WPCWA SW - South-western corners of ex-Public Cargo Works Area
Mid-Ebb Tide**

Date	Time	Weather Condition	Sampling Depth		Water Temperature			pH			Salinity			DO Saturation			DO		
					°C			-			ppt			%			mg/L		
					Value	Average		Value	Average		Value	Average		Value	Average		Value	Average	
29/6/2015	-	Fine	Surface	-	-	-	-	-	-	-	-	-	-	-	-	-	-	-	-
	9:55		Middle	1.5	28.70	28.70	28.7	8.37	8.37	8.4	23.09	23.09	23.1	89.3	90.0	89.7	6.06	6.10	6.08
	-		Bottom	-	-	-	-	-	-	-	-	-	-	-	-	-	-	-	-
2/7/2015	-	Fine	Surface	-	-	-	-	-	-	-	-	-	-	-	-	-	-	-	-
	10:10		Middle	1.5	27.00	27.00	27.0	8.24	8.24	8.2	25.99	25.99	26.0	64.3	65.7	65.0	3.73	3.82	3.78
	-		Bottom	-	-	-	-	-	-	-	-	-	-	-	-	-	-	-	-
4/7/2015	-	Fine	Surface	-	-	-	-	-	-	-	-	-	-	-	-	-	-	-	-
	13:55		Middle	1.5	27.50	27.50	27.5	8.26	8.26	8.3	14.60	14.60	14.6	25.1	24.9	25.0	1.82	1.80	<u>1.81</u>
	-		Bottom	-	-	-	-	-	-	-	-	-	-	-	-	-	-	-	-
6/7/2015	-	Fine	Surface	-	-	-	-	-	-	-	-	-	-	-	-	-	-	-	-
	14:25		Middle	1.5	27.10	27.10	27.1	8.23	8.23	8.2	26.29	26.29	26.3	72.6	73.0	72.8	4.92	4.99	4.96
	-		Bottom	-	-	-	-	-	-	-	-	-	-	-	-	-	-	-	-
8/7/2015	-	Fine	Surface	-	-	-	-	-	-	-	-	-	-	-	-	-	-	-	-
	17:23		Middle	1.5	25.60	25.60	25.6	8.26	8.26	8.3	30.92	30.92	30.9	54.6	53.1	53.9	3.74	3.63	3.69
	-		Bottom	-	-	-	-	-	-	-	-	-	-	-	-	-	-	-	-
10/7/2015	-	Cloudy	Surface	-	-	-	-	-	-	-	-	-	-	-	-	-	-	-	-
	18:50		Middle	1.5	26.36	26.36	26.4	7.62	7.62	7.6	24.23	24.23	24.2	81.1	82.4	81.8	5.71	5.79	5.75
	-		Bottom	-	-	-	-	-	-	-	-	-	-	-	-	-	-	-	-
13/7/2015	-	Fine	Surface	-	-	-	-	-	-	-	-	-	-	-	-	-	-	-	-
	10:45		Middle	1.5	27.00	27.00	27.0	8.19	8.19	8.2	30.68	30.68	30.7	49.9	50.3	50.1	3.35	3.37	3.36
	-		Bottom	-	-	-	-	-	-	-	-	-	-	-	-	-	-	-	-
15/7/2015	-	Fine	Surface	-	-	-	-	-	-	-	-	-	-	-	-	-	-	-	-
	11:52		Middle	1.5	27.50	27.50	27.5	8.20	8.20	8.2	27.66	27.65	27.7	38.9	39.6	39.3	2.63	2.67	<u>2.65</u>
	-		Bottom	-	-	-	-	-	-	-	-	-	-	-	-	-	-	-	-
17/7/2015	-	Fine	Surface	-	-	-	-	-	-	-	-	-	-	-	-	-	-	-	-
	10:45		Middle	1.5	27.10	27.10	27.1	8.18	8.18	8.2	30.75	30.75	30.8	61.1	61.1	61.1	4.09	4.09	4.09
	-		Bottom	-	-	-	-	-	-	-	-	-	-	-	-	-	-	-	-
20/7/2015	-	Cloudy	Surface	-	-	-	-	-	-	-	-	-	-	-	-	-	-	-	-
	15:05		Middle	1.5	26.70	26.70	26.7	8.36	8.36	8.4	24.67	24.67	24.7	50.3	50.4	50.4	3.51	3.52	3.52
	-		Bottom	-	-	-	-	-	-	-	-	-	-	-	-	-	-	-	-
22/7/2015	-	Amber Rainstorm	Surface	-	-	-	-	-	-	-	-	-	-	-	-	-	-	-	-
	-		Middle	-	-	-	-	-	-	-	-	-	-	-	-	-	-	-	-
	-		Bottom	-	-	-	-	-	-	-	-	-	-	-	-	-	-	-	-
25/7/2015	-	Cloudy	Surface	-	-	-	-	-	-	-	-	-	-	-	-	-	-	-	-
	8:58		Middle	1.5	26.80	26.80	26.8	8.24	8.24	8.2	13.97	13.97	14.0	50.7	49.7	50.2	3.75	3.68	3.72
	-		Bottom	-	-	-	-	-	-	-	-	-	-	-	-	-	-	-	-

Remarks:
Single underline denotes exceedance over Action Level.
Double underline denotes exceedance over Limit Level.



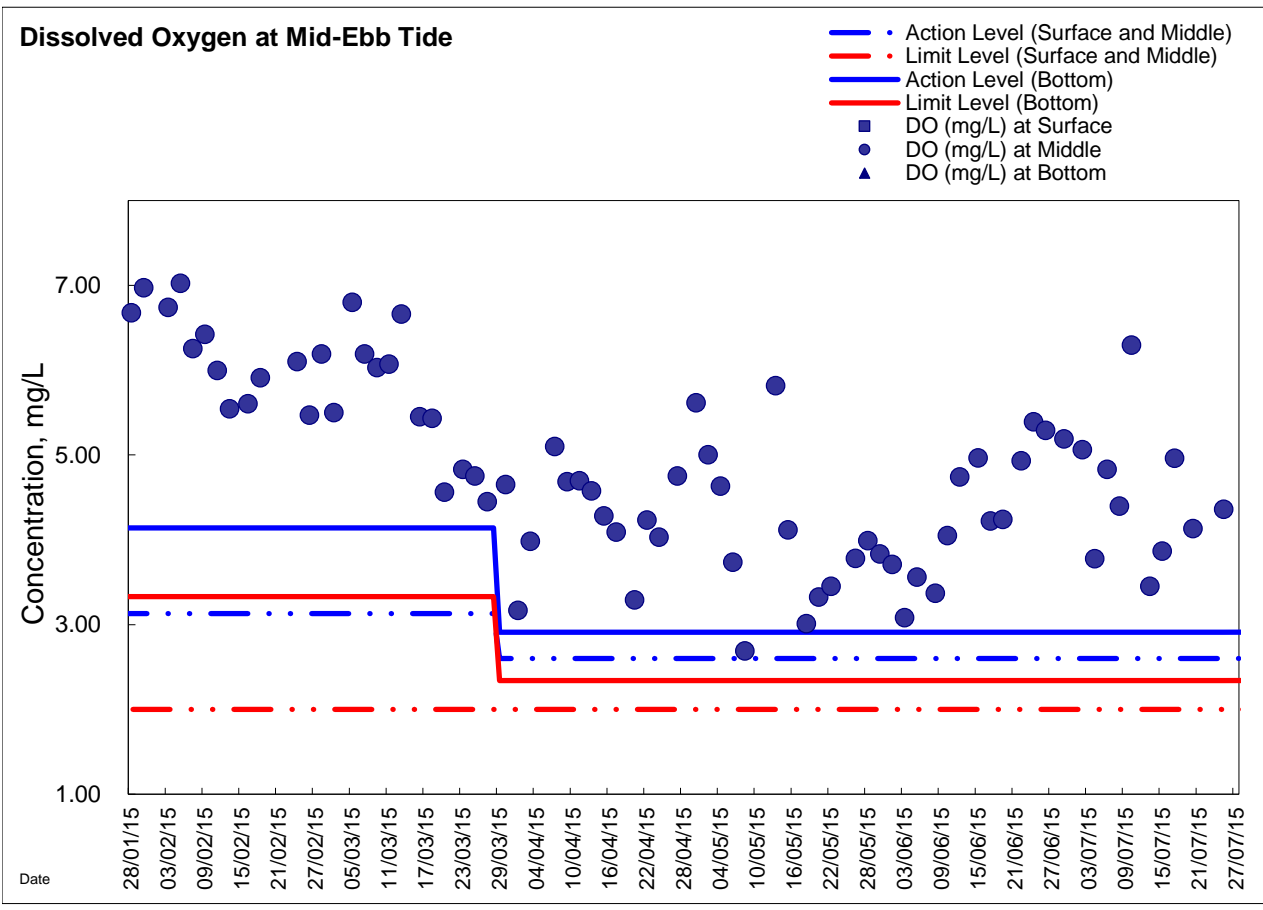
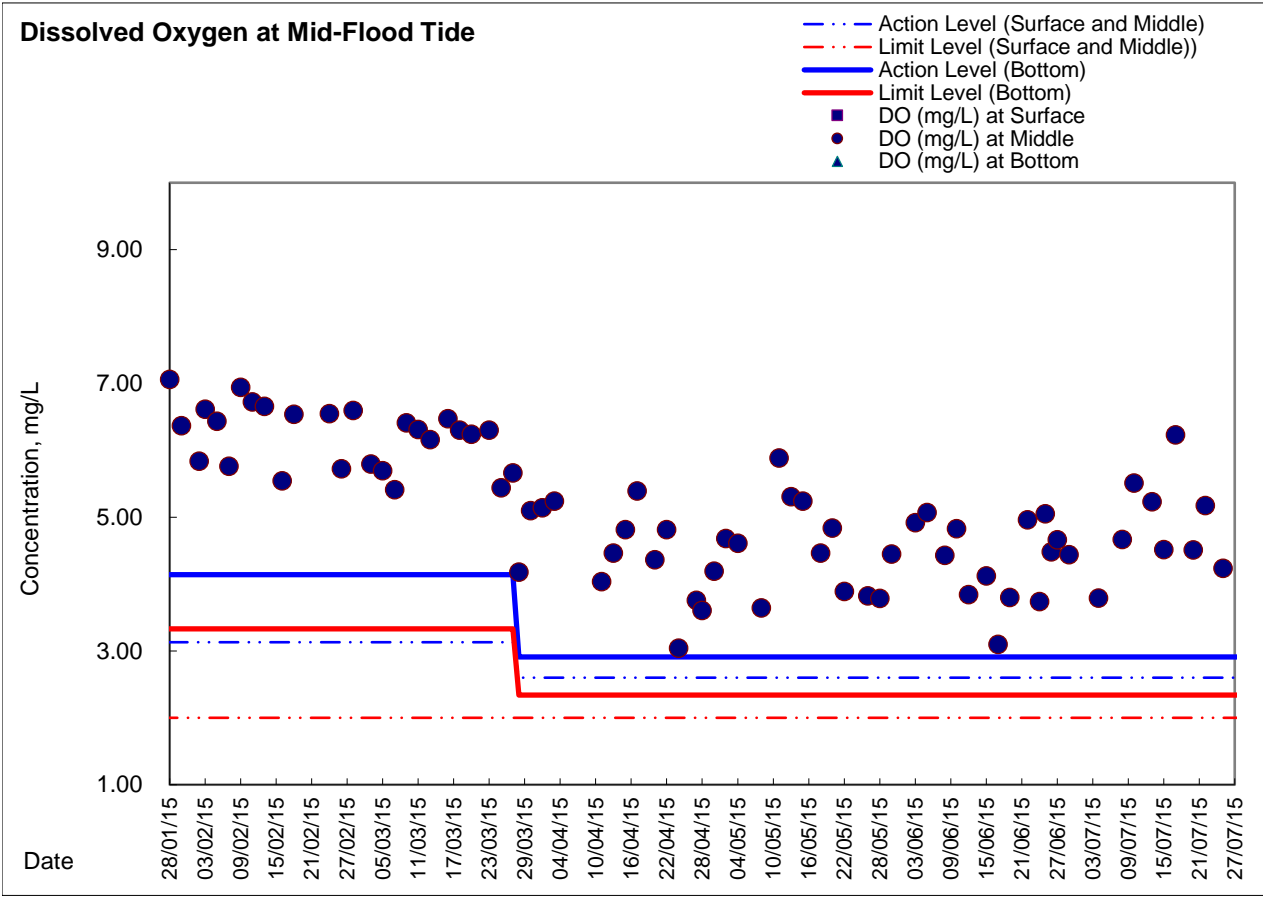
**Water Monitoring Result at Ex-WPCWA SE - South-eastern corners of ex-Public Cargo Works Area
Mid-Ebb Tide**

Date	Time	Weater Condition	Sampling Depth		Water Temperature				pH		Salinity		DO Saturation		DO		
					°C				-		ppt		%		mg/L		
					Value	Average	Value	Average	Value	Average	Value	Average	Value	Average	Value	Average	
29/6/2015	-	Fine	Surface	-	-	-	-	-	-	-	-	-	-	-	-	-	-
	-		Middle	-	-	-	-	-	-	-	-	-	-	-	-	-	-
	-		Bottom	-	-	-	-	-	-	-	-	-	-	-	-	-	-
2/7/2015	-	Fine	Surface	-	-	-	-	-	-	-	-	-	-	-	-	-	-
	-		Middle	-	-	-	-	-	-	-	-	-	-	-	-	-	-
	-		Bottom	-	-	-	-	-	-	-	-	-	-	-	-	-	-
4/7/2015	-	Fine	Surface	-	-	-	-	-	-	-	-	-	-	-	-	-	-
	-		Middle	-	-	-	-	-	-	-	-	-	-	-	-	-	-
	-		Bottom	-	-	-	-	-	-	-	-	-	-	-	-	-	-
6/7/2015	-	Fine	Surface	-	-	-	-	-	-	-	-	-	-	-	-	-	-
	-		Middle	-	-	-	-	-	-	-	-	-	-	-	-	-	-
	-		Bottom	-	-	-	-	-	-	-	-	-	-	-	-	-	-
8/7/2015	-	Fine	Surface	-	-	-	-	-	-	-	-	-	-	-	-	-	-
	-		Middle	-	-	-	-	-	-	-	-	-	-	-	-	-	-
	-		Bottom	-	-	-	-	-	-	-	-	-	-	-	-	-	-
10/7/2015	-	Cloudy	Surface	-	-	-	-	-	-	-	-	-	-	-	-	-	-
	-		Middle	-	-	-	-	-	-	-	-	-	-	-	-	-	-
	-		Bottom	-	-	-	-	-	-	-	-	-	-	-	-	-	-
13/7/2015	-	Fine	Surface	-	-	-	-	-	-	-	-	-	-	-	-	-	-
	-		Middle	-	-	-	-	-	-	-	-	-	-	-	-	-	-
	-		Bottom	-	-	-	-	-	-	-	-	-	-	-	-	-	-
15/7/2015	-	Fine	Surface	-	-	-	-	-	-	-	-	-	-	-	-	-	-
	-		Middle	-	-	-	-	-	-	-	-	-	-	-	-	-	-
	-		Bottom	-	-	-	-	-	-	-	-	-	-	-	-	-	-
17/7/2015	-	Fine	Surface	-	-	-	-	-	-	-	-	-	-	-	-	-	-
	-		Middle	-	-	-	-	-	-	-	-	-	-	-	-	-	-
	-		Bottom	-	-	-	-	-	-	-	-	-	-	-	-	-	-
20/7/2015	-	Cloudy	Surface	-	-	-	-	-	-	-	-	-	-	-	-	-	-
	-		Middle	-	-	-	-	-	-	-	-	-	-	-	-	-	-
	-		Bottom	-	-	-	-	-	-	-	-	-	-	-	-	-	-
22/7/2015	-	Amber Rainstorm	Surface	-	-	-	-	-	-	-	-	-	-	-	-	-	-
	-		Middle	-	-	-	-	-	-	-	-	-	-	-	-	-	-
	-		Bottom	-	-	-	-	-	-	-	-	-	-	-	-	-	-
25/7/2015	-	Cloudy	Surface	-	-	-	-	-	-	-	-	-	-	-	-	-	-
	-		Middle	-	-	-	-	-	-	-	-	-	-	-	-	-	-
	-		Bottom	-	-	-	-	-	-	-	-	-	-	-	-	-	-

Remarks:
Single underline denotes exceedance over Action Level.
Double underline denotes exceedance over Limit Level.

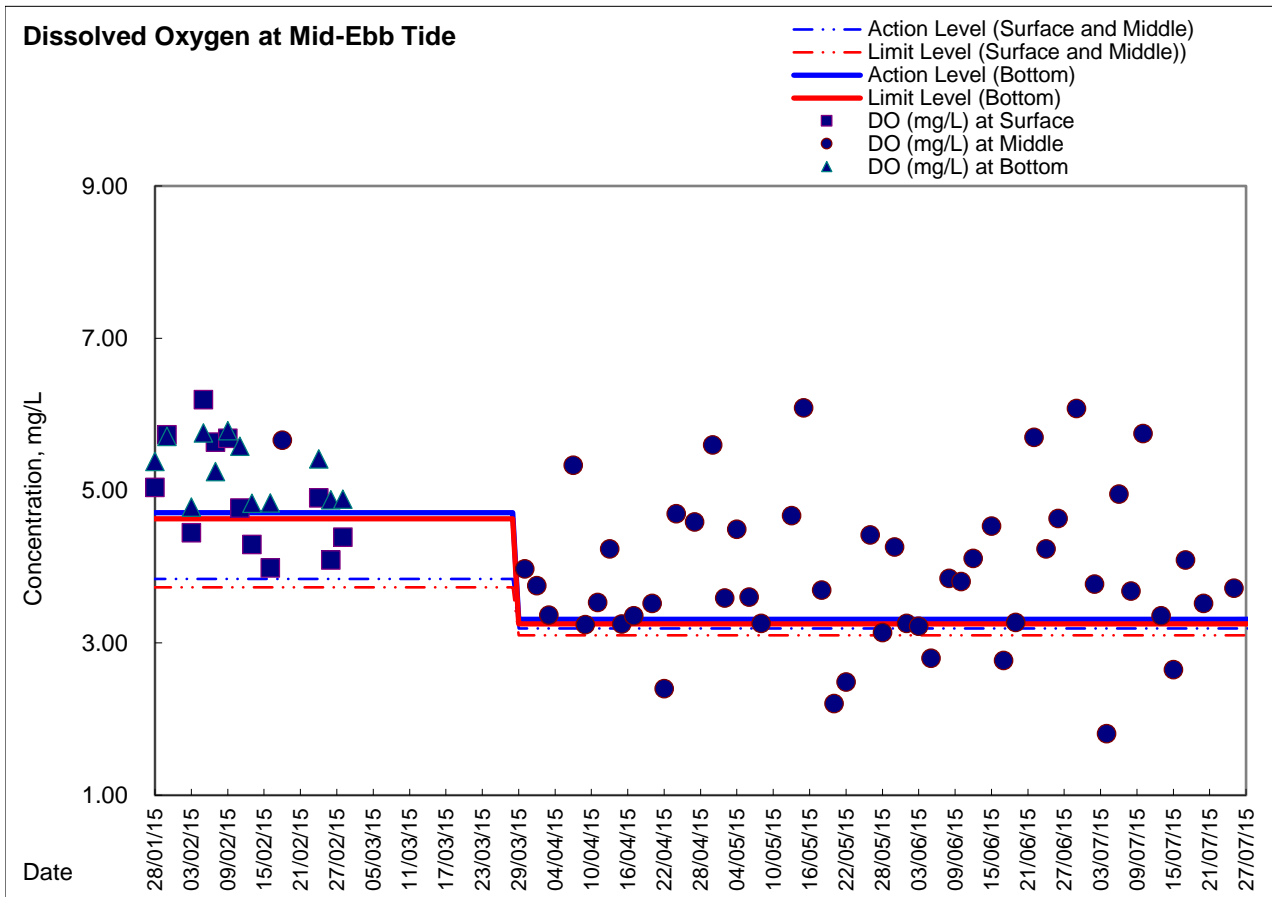
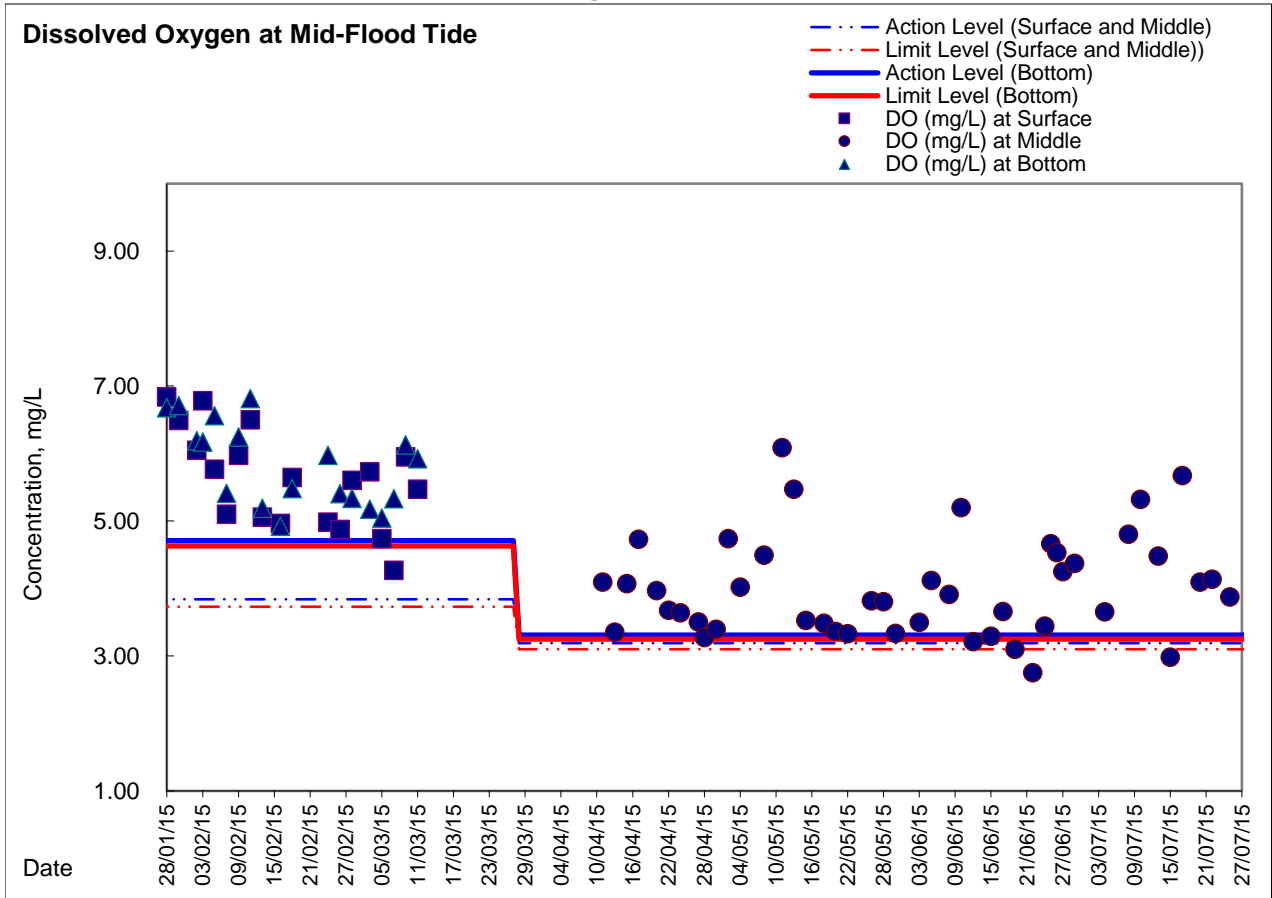


Graphic Presentation of Enhanced Water Monitoring Results (DO) at C6 - Excelsior Hotel





Graphic Presentation of Enhanced Water Monitoring Results (DO) at Ex-WPCWA SW - South-western corners of ex-Public Cargo Works Area





Graphic Presentation of Enhanced Water Monitoring Results (DO) at Ex-WPCWA SE - South-eastern corners of ex-Public Cargo Works Area

